

# THE Cresset

March 2014

St David's Day 1 March



Ash Wednesday 5 March



Shrove Tuesday 4 March

St Patrick's Day 17 March



Mothering Sunday 30 March



News, views and what's on, in and around Bottisham

# Saplings Pre-School Playgroup

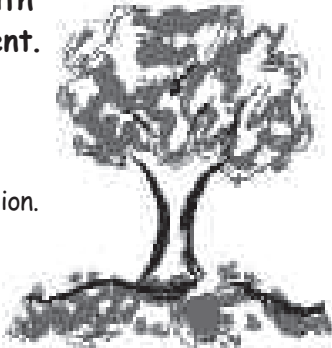
Based in Bottisham Primary School grounds, we offer lots of fun & structured play with caring qualified staff in a safe environment.

## Playgroup for 2½ years onwards

Sessions run on a Monday, Tuesday, Thursday and Friday morning, 9am - 12noon and afternoons 12.15 - 3.15pm depending on demand. £8.00 per session.

## Pre-playgroup for 2 to 2½ years

Creative play sessions for 2 to 2½ year olds with their mums, dads or childminders every Wednesday morning 9.15 - 11.15am. £6.50 per session



Places now available, please call 01223 813226 for more information!

I would like to think that we have some light at the end of the tunnel of uncertainty about the expansion of Bottisham in terms of housing. It looks as though the further development of Ox Meadow will be fixed at 50 houses, although the area of ground and design of houses are not as I write finalised. Discussions about allotments and play areas etc. continue.



There has also been a presentation to the village by the builders who are planning the development of the Crystal Structures site in Tunbridge Lane. Originally this area was designated for light commercial use with village employment in mind. As other places like Tunbridge Court are taking up some of that requirement, it may well be that the proposed 25 houses will take up the whole new development.

It will mark another closure of a chapter on Bottisham's life as the last of the old airfield buildings in the village disappear. I believe that will only leave the few buildings out on the old airfield, at the corner of the Wilbraham Rd., as a reminder of what was there. However, there is a permanent reminder in the display that is currently housed in the British Legion Social Club committee room, that shows the life of the military, here during WW2. This is managed by the BAMG (Bottisham Airfield Museum Group), and they hold open days a couple of times a year. Watch out for the notices in The Cresset.

Speaking of Old Bottisham, the family of the late Ted Norton whom many may remember, got in touch with me to say that they had a quantity of memorabilia and newspaper cuttings that may be of interest to people in Bottisham. Ted was a great collector of photographs and items about Bottisham and submitted many articles and photographs to the Cambridge Evening News etc. I now have this box with newspaper cuttings, Staine Hundred Chronicles and his diary from 1929 with entries every day about what he was doing. Clearly this mostly related to his work at Paul's Farm. Wondering what age he would have been, the page conveniently fell open on the page with "I am fifteen today" clearly written. The daily life of a 15 year old in those days was clearly full of interest and adventure.

I have passed it out to several people whom I thought would be interested. And that has revealed more links in the chain. If anybody knew Ted, or would be interested in seeing these items, do let me know. It is not a huge collection, but there is some interesting stuff.

We may have been complaining about the cold and wind and rain over the last month, but we should be glad we don't live in the South and South West. The legacy left by the Dutch centuries ago has allowed us to be secure in keeping relatively dry. I notice it is with Dutch help that the Somerset levels finally managed to start tackling the floods down there.

Nature takes no account of wealth in these matters. Multi-million pound homes in the Thames valley succumb to inundation as much as a small cottage in Somerset. The relative repair costs are probably similarly disparate.

No frozen ground this winter and hardly any ground frost to speak of, also no snow yet either. With March coming in and the spring flowers coming out, we may have just experienced the sort of winter that we should come to expect in the future. The forecasters said this could be the future, wet and windy with relatively milder winters, so we shouldn't be surprised. Still coming as I do from the west of Scotland, it's what they are used to up there! However none of that makes it any less miserable.

Never mind. Come July, this will just be a distant memory as we sit in the sunshine in 30deg., with a cold beer to cool us. If only that could be guaranteed every year, then the winters, whatever they bring, might be more tolerable.

In any event stay warm and look forward to the Spring.

Peter Walker, Editor

**MANCHETTS** Cambridgeshire • Suffolk  
Rescue & Recovery

24hr  
response centre  
01638  
742987

"For all your rescue & recovery needs at the roadside,  
motorbikes, vans, cars, and commercial vehicles alike"

www.manchetts.co.uk e-mail: recovery@manchetts.co.uk  
Brewin Road Burwell Cambs CB0 0BQ

Copy deadline for next issue is 14 March.

Please send material to the editor at [cresset@bottishampc.org.uk](mailto:cresset@bottishampc.org.uk)

Have you thought of advertising your business in **The Cresset**?

Email the Editor for details: [cresset@bottishampc.org.uk](mailto:cresset@bottishampc.org.uk)

Marshall's Award Winning Driveway installer

Our areas of expertise include:

- Driveways and Parking
- Paving and Pottery
- Fencing, Trellis Work and Decking
- Turfing and seeding
- All Building work and Property Maintenance



Office: 01638 721893 or Site: 07789261266

[www.amsbuildingandlandscaping.co.uk](http://www.amsbuildingandlandscaping.co.uk)

We are fully insured and work to the highest standards.



## CHILDREN'S NEARLY NEW SALE

### Saplings Pre-School Playgroup

Are once again holding their very popular Sale

Saturday 5<sup>th</sup> April 10.30am to 12.00noon

At Bottisham Primary School

In aid of Saplings Pre-School Playgroup funds



If you have Children's Clothing and Toys that are like new, but no longer needed by you, then you can help the Playgroup and yourself, by taking part and taking a stall. Stalls are available for £5.00.

E-Mail: [Saplingspreischool@hotmail.co.uk](mailto:Saplingspreischool@hotmail.co.uk) to book your space.

Come along on the day and grab yourself a bargain. Entrance 50p

## Contents

The Royal British Legion Social Club.....5	Sports Nut.....47
Holy Trinity Services.....7	Anglesey Abbey & Wicken Fen.....51
Bottisham Patients' Group .....9	Jolley Old World.....53
To the Editor.....11	WEA.....55
Bottisham Village College .....14	At a Glance.....57
Parish Council Notes .....25	Cambs County Council .....59
Bottisham/District Gardening Club.....33	RE:NEW.....61
Sales, Wants and Swaps.....35	East Cambs District Councillors' Notes...63
Bottisham Community Library.....37	The Rain Spot .....64
Public Transport Matters.....37	Bottisham WI.....65
Cambridgeshire Fire/Rescue.....39	Useful Information.....68

## BOTTISHAM BOWLING CLUB

### COFFEE MORNING

12<sup>th</sup> April

10.30AM TO NOON

At the Royal British Legion Social Club

Cake Stall / Book stall

Jewellery / Craft items

Raffle / Guess the weight of the cake



## Bottisham Bowling Club

### Quiz Night

Saturday 22<sup>nd</sup> March

Open to all

£3 per head 7.30pm Start.

Phone 311088 to book a table (Max. 8 people)



# BOTTISHAM PHARMACY



UNDER NEW OWNERSHIP  
 PROVIDING **NHS** SERVICES  
 YOUR LOCAL INDEPENDENT PHARMACY



*FREE repeat prescription ordering  
 collection and delivery service*

## ONE CALL DOES IT ALL

NO NEED FOR NUMEROUS JOURNEYS

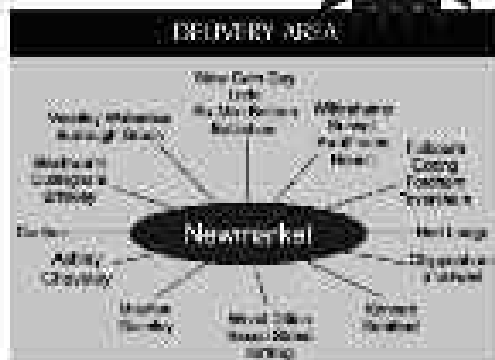
With one call to us we will

- Order your Prescription
- Collect your Prescription
- Deliver your Prescription



FREE services available from the following local Doctors Surgeries:

- Bottisham Surgery
- Burwell Surgery
- Oakfield Surgery
- Orchard House Surgery
- Roxkery Medical Centre
- Raynards Surgery, Red Lodge
- Fullbourn Health Centre
- Cherry Hinton Medical Centre



We deliver incontinence pads **FREE OF CHARGE** if we dispense your prescription

**Telephone: 01223 812321**

8 High Street, Bottisham, Cambridge CB25 9DG  
 bottishampharmacy@gmail.com



## The Royal British Legion Social Club

### WHAT'S ON THIS MONTH AT THE LEGION SOCIAL CLUB

Line Dancing every Tuesday and Wednesday (except the first Wednesday in the month.)

Bingo every 1st and 3rd Sunday

#### OPENING TIMES

Mon- Thurs 5-11pm : Fri 5-12pm : Sat 11.45-12pm : Sun 12-11pm  
 (Sunday may close at 10pm with the discretion of the staff on duty)

All live premier league games & Sky sports are shown at the club

**Saturday 22<sup>nd</sup> March**  
**Bowling Club Quiz Night**

£3 per head 7.30pm Start

Phone 811669 to book a table (Max. 8 people)

**Saturday 12<sup>th</sup> April**

**Bowling Club Coffee Morning 10.30am to 12.00**

Cake Stall / Book stall / Jewellery / Craft items

Raffle / Guess the weight of the cake

**£1.00 ENTRY INCLUDING COFFEE/TEA & BISCUITS**

Are you having a celebration?

Are you looking for a business meeting venue?

Is your society or Club looking for a friendly place to meet?

If so, the Hall and Poppy Lounge room is available to hire for all your functions  
 call in and speak to Kate or ring the Secretary on 812407

The Royal British Legion, Bottisham & District Branch,  
 31 Downing Close, Bottisham, Cambridge CB25 9BA  
 Tel. 01223 812063 [www.britishlegion.org.uk/branches/bottisham](http://www.britishlegion.org.uk/branches/bottisham)

### Colin Sore

The Bottisham Branch of The Royal British Legion would like to thank the Sore family for the donations received in memory of Colin Sore who sadly passed away recently. A long time member of the Bottisham Branch, Colin is well remembered. The £306.22 received will go to *The Poppy Appeal* in his name from the Bottisham Branch.

John Overton, Chairman, TRBL Bottisham Branch



# JOHN JARVIS

## BUILDERS

Property Maintenance, Extensions,  
Alterations, Painting, Brickwork, Roofing

All building work carried out

Prompt friendly service

Insurance work undertaken

**01638 743623**

**Mobile 07802 659283**

*No job too small*

# C. G. Gardiner

## Heating and Plumbing Services

*For all your domestic heating  
and plumbing needs contact*

 **01223 811883**

*Howgar House, 41 Bell Road, Bottisham, Cambridge, CB25 9DF*

## Holy Trinity Church

We are frequently asked about the content of some of our services, particularly Morning Prayer and those designed for all ages. We hope that the outlines below will help you to decide which services are right for you.

### FAMILY SERVICE

For people of all ages who prefer a more informal service. The usual format contains worship songs, a talk for adults and an activity for children, as well as a reading and prayers, but can vary a little from service to service. The talks frequently range beyond the purely theological.

### HOLY COMMUNION

The **8 am said service** follows the order in the Book of Common Prayer, using traditional language. There is no sermon and the service lasts only around 35 minutes.

The **11 am and Benefice services** use much more contemporary language. Bread and wine are blessed in remembrance of Jesus and his words at the Last Supper. They are distributed to communicant members of the Church, but others are very welcome to come to the altar for a blessing.

### MORNING PRAYER

Taken from Common Worship, the most recent set of authorised, contemporary language services in the Church of England, this appeals to people who want to worship in a structured way, but without communion and with less formal liturgy. There is much singing, as well as a thought-provoking talk related to the readings.

### C by C

A quiet meditative evening service, entirely lit by candlelight.

There are, of course, other services at special seasons or to mark particular events in the church or national year. Full details of all services in the churches in the Anglesey Group (Bottisham, Lode, Quy, Swaffham Bulbeck and Swaffham Prior) are to be found on the notice board in the church.

*Do join us and explore the comfort, guidance and love of God. We look forward to seeing you at one of our services soon. Everyone is most welcome!*

### Services in Holy Trinity in March

Sun 2nd	11 a.m.	Family Service led by Dr Mike Young
Wed 5th	No service	in Holy Trinity
	7.30 p.m.	Ash Wednesday Communion in Swaffham Bulbeck
Sun 9th	11 a.m.	Holy Communion Revd Elizabeth Caswell
Sun 16th	8 a.m.	Holy Communion (Book of Common Prayer) Revd Lawrie Marsh
	11 a.m.	Morning Prayer Dr Sarah Maxwell
Sun 23rd	No service	in Holy Trinity
	10 a.m.	Benefice Communion in Swaffham Bulbeck
Sun 30th	11 a.m.	Family Service with Baptism Revd Sue Giles

*Details of other services in the Benefice are on the notice board in the church.*

www.babysensory.com

Award-winning classes for babies from birth to 13 months



Classes run on **Monday Mornings**  
Quy Village Hall  
CB25 9AW

For more details on all our Cambridgeshire classes visit:  
[www.babysensory.com](http://www.babysensory.com)

Please contact: Juliette  
Tel: 07966 789785  
Email: [cambridge@babysensory.co.uk](mailto:cambridge@babysensory.co.uk)



camsmartrepairs.co.uk

Mobile service at your front door in place of work

Bumper repair Alloy wheels  
 Vandal scratches Free estimates  
 Dent repairs No VAT

**07462 893390**

SAVE UP TO 20% against other 'SMART' repairs

MEMBER OF THE MOTOR REPAIRERS ASSOCIATION (MIRA)



**BOTTISHAM MEETING POINT**

WEDNESDAY 10.30am - 11.00am

at  
**QUEEN'S COURT DAY CENTRE**

A place where you can meet old friends, make new friendships, relax, chat and enjoy coffee, cake and biscuits in a friendly relaxed atmosphere.

EVERYONE WELCOME  
ADMISSION FREE

**IN THE COMMUNITY ROOM at QUEEN'S COURT, 1<sup>ST</sup> SATURDAY OF THE MONTH FROM 10AM**



**THE HUB**  
BOTTISHAM

COMMUNITY INFO  
 COFFEE & CAKE  
 GAMES & CRAFT  
 CHARITY STALLS  
 GYMNASIUM

**all ages WELCOME!**

Organized by Queen's Court and **REDFISH** for the community

## Bottisham Patients' Group

• **Annual Patients' Satisfaction Survey.** If you went to Bottisham Surgery in mid-January you may have completed a questionnaire to show your level of satisfaction with the care and services which the Medical Practice provides. This was the GPAQ (General Practice Annual Questionnaire) survey, commonly used by practices in England so that comparisons and general trends can be identified and used to plan provision for the coming year. This year the survey not only showed that the level of satisfaction with the care patients receive from the doctors and nurses at Bottisham is extremely high, it is even higher than last year. Scores of 98 or 99% were frequent for different aspects of care. Yet again, we're reminded how lucky we are to live in an area where the standard of both primary and secondary health care is so high. A summary of the survey's findings and the action plan arising from it will be published in the April village magazines and on the Practice's website.

• **Parking at the Surgery.** At this time of year the car park at the Surgery is often full. If there isn't a space, please park outside at the roadside and not in the entrance road, which can hinder ambulance access when responding to emergencies at the Surgery. There is a drop-off space in front of the entrance door for patients with poor mobility.

• **Making – and missing – appointments.** You can now book or cancel an appointment with a doctor online at [www.bottishammedicalpractice.nhs.uk](http://www.bottishammedicalpractice.nhs.uk). At the top of the home page, click on the 'Appointments' tab, then on 'Access the online appointment system'. You need a user name and password to use the service. If you already order repeat prescriptions online you have these already; if not, ask at Reception for them. In the last three months of 2013, 305 appointments at the Surgery were missed where patients did not phone, or visit, to apologise or rearrange them. The NHS does not pay the Practice for these missed appointments so precious consultation time is wasted and funding is lost.

• **Heart Start.** 'Heart Start' is a programme run by the British Heart Foundation to provide free training in first aid for life threatening situations like cardiac arrest, choking and serious bleeding. 22 patients spent the morning of Saturday 8th February at the Surgery taking part in a hands-on training session expertly led by two experienced Community First Responders. It was an entertaining and instructive session with clear explanations of why certain processes must be followed in different scenarios. There were also important changes to some practices to note for those who had learned first aid some years ago. Because the session is practical, numbers had to be limited and we were sorry to turn away a number of patients who tried to book places late in the previous week. We will be offering another 'Heart Start' session later in the year, so watch this space and the Surgery notice board.

• **NHS Choices website.** We're all aware of the pressures on doctors' and nurses' time and there may be things we can do to treat our family's ailments without needing to consult them. The 'NHS Choices' website is recommended by the Practice as a source of easily accessible information and advice on all aspects of personal health. Particularly useful are the 'Health A-Z' pages which you'll find at [www.nhs.uk/Conditions/Pages/hub.aspx](http://www.nhs.uk/Conditions/Pages/hub.aspx).

• **Futures dates**

1. The Walking Group will meet on Wednesday 5th and Friday 21st March.
2. The Patients' Group AGM is on Thursday 24th April 2014 at 7.00 pm at Bottisham Village College when we plan to have another talk on an important health topic. There will be more details in the April magazines and on the Surgery notice board.

Meanwhile if you have any comments of queries about the Patients' Group you can email our Secretary at [patientsgroup@outlook.com](mailto:patientsgroup@outlook.com).

# Jasmine

Chinese & Thai Food to Take Away

Telephone

**01223 811642**

*Fish & Chips also Available*

## OPENING HOURS

Tuesday to Thursday 4.30pm - 10.0pm  
Friday and Saturday 4.30pm - 10.30pm  
Sunday 4.30pm - 10.0pm

OPEN AS USUAL ON BANK HOLIDAYS

2 HIGH STREET - BOTTISHAM -  
CAMBRIDGE CB25 1DQ

# K.J.P.

## Building/Maintenance



Including:

Design, landscapes, patios, fencing,  
gardening, decking, painting,  
decorating, tiling, all interior work  
etc.

Tel: 01223 812021 or  
mobile 07799 504043

**R. BRISTLEY** Est. 1974  
9 Collings Place, Newmarket CB8 1EX

## BRUSH ELECTRIC SWEEP

- All Chimneys Swept
- Solid Fuel, Oil and Gas
- Cows, Nets and Pots Fitted
- Firebricks Replaced
- Carpets Cleaned
- Competitive Prices
- Very Clean
- Family Business
- Public Liability Insurance



Telephone:  
Newmarket (01638) 662439

# JCM

Property Maintenance  
Ltd

**For the best in  
Renovation,  
Redecoration  
& Repair**

Contact Joel Clarke-Morgan  
On 07886 586229  
or e-mail: JCM@weyr19.co.uk

[www.jcmpropertymaintenance.co.uk](http://www.jcmpropertymaintenance.co.uk)  
47 Frinton Rd, Newmarket, CB8 0GE

## To the Editor

Dear Editor,

I have just read Mr Ibbitt's letter in the February issue, regarding the recent meeting at Bottisham Village College, and his comments regarding cricket.

For many years I have been Chairman of both Bottisham & Lode cricket club and Bottisham Sports Assoc. Firstly, I would like to recount the recent history of cricket/pavilion at Bottisham Village College. As many of you will be aware our current pavilion was built over 30 years ago by a group of dedicated volunteers from the village. The various sports clubs i.e. Cricket, football, tennis and croquet used these excellent facilities, and the school throughout the academic year. The Sports Assoc committee was set up to run/maintain the pavilion on behalf of the sport clubs, and I was invited/took over the role of Chairman from Denis 'Digger' Moules about 16 years ago.

Almost ten years ago, our arch rivals Lode Cricket Club decided to fold their club, due to lack of players/volunteers. It was clear Bottisham Cricket club would end up in the same position sooner or later, so we held a joint EGM, and decided it would be best if we merged the two clubs. As a result, we were able to field two sides every Saturday, alternating home matches between our two grounds, i.e. Village College and The Passage at Lode.

A club will only exist if it is financially sound and just as important you need a group of dedicated volunteers. Our ground at the Village College was looked after for many years by Graham "Hum" Barker, assisted by our then Treasurer; Graham "Dizzy" Darling and yours truly, along with guest appearances by some of our players. Hum who had done a brilliant job over the years, working many many hours decided to hang up his boots and take up bowls and understandably chose to step down as groundsman. With no person prepared to take on this vital role, and coupled with two sets of overheads to maintain the grounds, we decided to "mothball" the Village College ground and play all cricket at Lode.

A couple of years later, under the supervision of our current secretary, Alan Lamb, new facilities were built at Lode to be used by the sports clubs and the community, and as a result we became the envy of many clubs in the County.

I regularly send reports to the Cresset about our cricket club, and this season we aim to have two Saturday teams, a midweek team and three Colts teams at U11, U13 and U15. We have 5 Colts players representing our club at County level, and an U16 team will represent the County at the regional indoor finals this month at UEA, Norwich, even though they are all 14 & 15!

Lastly, We are always in need of new players at all levels of our club, and volunteers (cricket experience is not necessary!) to keep the club running! So check out our homepage for details of indoor nets, start of training nights and fixtures etc, otherwise we may end up in the same position as Lode CC....

*Charles Fletcher, Chairman  
Bottisham & Lode CC, Bottisham Sports Assoc*

Dear Editor,

I have been involved with Bottisham Sports Association for over 35 years in various roles including captain of the cricket club for many years, manager of a colts football team for 7 years and I am after 15 years, still the treasurer of the Sports Association.

As far as I am aware in all these years when I have been involved, the Village College has never put any restrictions on teams using the Sports Pavilion and the school playing fields. In fact they have been very supportive allowing the colts football to mark out pitches of various sizes on the playing field and to store goals, mowers, line marking equipment etc in the tractor shed.

*(To the Editor continued on page 13.)*

## WHITSTABLE Kent Coast

Three bedroomed  
Victorian Terrace available for  
self-catering holidays

Situated in the heart of the  
conservation area  
two minutes stroll from shops,  
restaurants, beach  
and the harbour

Phone 811447  
dawnrahman1@hotmail.com

## D.S. FREEMAN Painters & Decorators

- Residential & Commercial
- Interior & External
- Fully Insured
- All Aspects Undertaken

d.s.freeman@hotmail.co.uk  
**Tel: 01223 812920**  
43 Mill Road, Lode, Cambridge CB25 7EN

*(To the Editor continued.)*

I would like to put the record straight after the somewhat misleading letter in last month's Cresset regarding the cricket club. The cricket club didn't fold but merged with Lode to form Bottisham/Lode cricket club. The reason for this was that both Bottisham and Lode were struggling to raise teams each week due to lack of interest, with many youngsters having to do Saturday jobs so not able to play on a Saturday afternoon. It was originally agreed that home games would alternate between Bottisham and Lode. This continued for a couple of seasons but due to the costs of maintaining two cricket squares and the need to have equipment at both grounds it was decided that all home games would be played at Lode. The availability of the Bottisham sports pavilion or playing fields had NO bearing on this decision.

I consider that we are all very lucky to live in such a lovely village with good amenities and an excellent Village College which both my 2 children and I attended.

Please give support to the Village College and all the college staff to eliminate the unnecessary, hurtful and damaging negativity that seems to have built up with some of our residents.

*Yours sincerely, Graham Darling*

*Dear Editor,*

Congratulations and thank you to Bottisham Players for a highly professional and entertaining pantomime. No need to mention any names as it was a huge team effort from every department both on and offstage. We are so lucky to have such a talented group performing locally.

*Angela Humphreys*

## A. J. PRINCE Painter and Decorator Interior and Exterior



*No job too large or small  
Free estimates and advice*

24 Hall Lane Turwell  
Tel: 01638 741 420  
Mob 07880 622933

## Carpentry Services TONY MARTIN

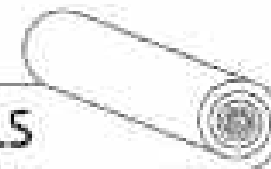
Over 30 years experience

*Any carpentry jobs  
undertaken – BIG or small*

Call Tony  
for a free estimate  
**Tel: 01223 812786**  
**(Bottisham)**  
**Mobile: 07767475987**

## PETER FISHER

### CARPETS - WOODS - VINYL



A wide range of floorings supplied and fitted.  
Please call for a free estimate and select in your home.

Tel: (Bottisham) **01223 811321**  
Mobile: **07879 494 685**

Great service for  
**30** years



## Bottisham Village College

I would like to begin by thanking members of the Bottisham community for joining us at our open meeting on Tuesday 14th January. We hope that those who attended found it both an informative and helpful meeting. For the benefit of those who did not attend, the evening included a presentation on the life and developments at the college in recent years; all aspects of our work were covered including community provision, access to the site, as well as the education of the 1050 young people in our care. In doing so, we hoped to provide a helpful reminder of the broad vision of Henry Morris, the founder of village colleges in Cambridgeshire. Henry Morris was in charge of education for Cambridgeshire between 1922 – 1954; he was passionate in his commitment to ensuring that excellent schools and educational and recreational opportunities for all age groups, were as readily available to those living in rural locations as in towns and cities. This is a philosophy still held dear to all at the College.

As well as describing our success as an outstanding and heavily over-subscribed secondary school, serving our broad geographical area and beyond, we also outlined the wide-ranging opportunities that continue to be on offer to all members of our local community, despite very significant and ongoing reductions in funding for these areas. For example:

**Sports Centre**, playing fields and astroturf – available for use 7 days a week, for much of the week from 7am – 10pm. A recent survey showed that, in a single week, 728 individuals used these facilities, with an additional 22 group bookings.

A very successful and highly regarded **Adult Education programme**. In the current year over 55 different courses/activities have been on offer. Last year, we were set targets by the Local Authority to attract 279 learners, but in reality we managed to attract 428. In addition there are a number of local interest groups who meet regularly at the college.

▣ **The Locality Centre** at the front of our site offers wide-ranging and valuable support to children, young people and families in our community, e.g. youth workers, counsellors and health care professionals.

▣ We're also delighted that the **community library** is based on the college site, providing access, quite unusually during the school day as well as in the evenings. Following recent discussions, individuals from the college and community library association are committed to exploring ways of maximising income through joint funding applications.

We believe that this clearly demonstrates our ongoing commitment to opening our facilities to residents not only in Bottisham, but also to the wider community within our catchment, irrespective of the fact that we are neither required, nor funded to do so; the funding that we receive from the Secretary of State for Education is to cover the normal running costs of the college, to enable it to provide education to its students.

There are two key issues that were raised during the meeting that I would like to specifically respond to:

- **Provision of a village play area** – We absolutely understand and share the concerns that Bottisham does not have a recreational playground for young children. We have previously met with the Parish Council, indicating that although there are a range of significant issues that would need to be addressed, such as security and safeguarding, the governing body is happy to continue to explore the possibility of us applying to the Secretary of State for Education, for permission to establish such an area on the college site. This was our position before the open meeting and remains so. Indeed, already a further meeting has taken place and we are now waiting for the Parish Council to come back to us with some firmer proposals for our consideration. We hope to be in a position to update you on this issue in due course.

- **Communication** – Following the open meeting, we are committed to working with relevant groups and individuals to improve the mechanisms for communication, with the aim of achieving better mutual understanding and trust.

*(BVC continued next page.)*

*(BVC continued.)*

I would urge you to visit our recently developed website at [www.bottishamvc.org](http://www.bottishamvc.org) as it contains a wealth of information about all aspects of college life. It is also possible to sign up to our twitter feed, so that you can automatically receive a range of news items throughout the year. The Adult & Community Learning section of the website also provides the facility for you to suggest additional activities or courses that you would like to see on offer; our commitment is clear, if together we can get sufficient enrolments and find an appropriate tutor, we will put on a new course or activity.

One immediate development following the meeting is that we have already put in place a means of sharing our termly college Newsletter to a wider audience. Following discussions with Peter Walker, we hope in the future that you will be regularly reading a selection of articles in The Cresset, as well as being able to access the full publication in community facilities, such as the local surgery, as well as via our website and in the College library.

Since the meeting we have been delighted by the positive feedback that we have had from many members of the local community, who have voiced their ongoing support for the college. This is greatly appreciated, especially in light of the extreme budgetary situation that all Cambridgeshire schools find themselves in; we continue to be the lowest funded Local Authority in the country, and as an individual school we receive approximately £630,000 less each year than if we were funded at the average figure. Despite these significant challenges we remain absolutely committed to continuing to offer outstanding educational opportunities to all of the young people in our care. *Kate Evans*

## COFFEE AND CAKE MORNING

IN AID OF THE CYSTIC FIBROSIS TRUST

Thursday 27<sup>th</sup> March 2014 from 10.30am to 12.30pm.

Bring and Buy

Raffle

Entrance £2

Venue: The Golden Bull, 90 High Street, Bottisham



## Locally Brewed Beer

*- the perfect gift?*

We deliver our bottle-conditioned beers, in boxes of 6, from the brewery directly to Bottisham doorsteps.

See website for details of our real ales – [www.craftybeers.co.uk](http://www.craftybeers.co.uk)

Brewed in GREAT WILBRAHAM



# The Carpenters Arms

Brew Pub & Restaurant  
Great Wilbraham

A Cambridgeshire Top Pub  
Award for Food, Wine, Beer  
& Top 10 UK Value



▶ Award winning, French influenced fine dining  
▶ Cosy bar - enjoy a pint, a chat, & bar meals

**New** Our own real ale - brewed on the premises!



Carpenters Cask Sixteen Strides  
Santagnon Blonde



For more information, sample menus, prices and opening times - Or Scan Code  
Website: [www.carpentersarmsgastropub.co.uk](http://www.carpentersarmsgastropub.co.uk) ☎ 01223 863000

The Carpenters Arms, 10 High Street, Great Wilbraham, CB21 5JD




# Ristorante Il Piccolo Mondo

Telephone 01223 471434 for reservations

85 High Street Bostonham Cambridge CB25 9BA

OPENING TIMES  
MONDAYS & TUESDAYS - CLOSED  
WEDNESDAYS / THURSDAYS / FRIDAYS / SATURDAYS  
12.00 - 2.30pm & 6.30 - 9.30pm  
SUNDAYS 12 - 2.30pm



# THE WHITE SWAN

AT QUAY

MODERN BRITISH FOOD IS BACK ON THE MENU  
(NOT TO MENTION THE GREAT LOCAL BEER,  
EXCELLENT WINE AND GOOD COMPANY)

OPEN DAILY FROM 12.00  
(FOOD SERVICE FROM 12.00 - 1.00PM AND 6.00PM TO 9.00PM)

- ✦ SEASONAL BAR MENU
- ✦ FULL RESTAURANT MENU
- ✦ WEEKDAY LIGHT BITES
- ✦ TASTY SUNDAY BRISTS
- ✦ CASE CONDITIONED ALES
- ✦ PRIVATE DINING AND FUNCTIONS
- ✦ BOOKING NOW AVAILABLE FOR WEDDINGS AND RESTAURANT



MAIN STREET, STOW-LUM-QUAY,  
CB25 9AB TEL: 01223 811821  
[WWW.WHITE-SWAN-QUAY.CO.UK](http://WWW.WHITE-SWAN-QUAY.CO.UK)  
[INFO@WHITE-SWAN-QUAY.CO.UK](mailto:INFO@WHITE-SWAN-QUAY.CO.UK)

# The Six Bells Fulbourn



Home cooked fresh food  
Open for lunches every day,  
evening meals Tuesday to Saturday

Separate function room  
catering for weddings, parties and other  
occasions

Resident music - Hugo's Disco

Traditional Jazz  
every first and third Wednesdays with the  
Riverside Jazz Band

Senior Citizens Lunches every Thursday

Fresh Fish Night - Thursday  
Eat in or Take-away

Curry Night - Fridays

Lindy's Quiz Night - Thursdays  
Starting at 9.15 pm - Prizes to be won

9 High Street, Fulbourn  
Telephone 01223 880244

Large selection of real ales  
Wines from around the world



# N.C.S.

**BRUSH ELECTRIC SWEEP  
ALL CHIMNEYS SWEEP**

- BIRDS NESTS REMOVED
- OIL & GAS BOILERS
- SOLID FUEL, STOVES FITTED
- SMOKE PRESSURE TESTING
- INSECT MESH, POTS, COWLS
- FLUE LINERS SUPPLIED & FITTED
- BIRD GUARDS & TERMINAL FITTED
- GUTTERS CLEANED & REPAIRED
- GENERAL PLUMBING WORK

**FOR FREE QUOTE CALL  
07824 727277 or 01638 662760**

EMAIL  
NCS.NEWMARKET@YAHOO.CO.UK  
WEBSITE  
[www.ncsnewmarket.co.uk](http://www.ncsnewmarket.co.uk)

\*Send text or e-mail for 10% discount  
Answers within an hour. • Waiting time approx. 1-2 weeks

**VERY CLEAN • Public liability insurance  
- Competitive rates -**

## MOLE CATCHER FOR HIRE



10 YEARS EXPERIENCE IN  
MOLE & RABBIT CATCHING  
USING ONLY TRADITIONAL METHODS

**NO GASSES OR POISONS**

FROM SMALL BACK GARDENS  
TO FIELDS & FARMHOUSES

MEMBER OF THE BRITISH TRADITIONAL  
MOLE CATCHERS ASSOCIATION

COVERING - CAMBRIDGESHIRE & SURROUND

TEL: 01553 740616 MOB: 07759 485640

## HARRISONS OF BURWELL LTD

(Previously N. E. & S. Harrison)

### Plumbing and Heating

**FREE ESTIMATES GIVEN**

Gas Boiler Servicing

Clarence House, 7 Ness Road, Burwell, Cambs CB5 0AA  
Telephone: Newmarket 01638 742873 - Mobile 07932 773515  
e-mail: [nigel.harrison@ntlworld.com](mailto:nigel.harrison@ntlworld.com)  
C.O.R.G.I. Registered



## HAYDEN

**THE CLEANING SPECIALIST**

WOULD YOU LIKE YOUR CARPETS  
OR UPHOLSTERY CLEANED?

HAYDEN IS LOCAL TO THE AREA,  
OFFERING FREE QUOTATIONS  
AND ADVICE.

**MERRYWOOD**  
8 LODE RD., BOTTISHAM CB25 9DJ  
01223 813766 OR 07919 561665

## OvenPad Cleaning Services

I will professionally & efficiently  
clean ovens, ranges, Agas,  
ceramic hobs, extractors,  
microwaves and BBQs.

**It's a dirty job, why  
not give me a call?**

Contact **Paddy Kelly** on  
Tel: 01638 742703  
Mob: 07752 631343  
Email: [info@ovenpad.com](mailto:info@ovenpad.com)  
Website: [www.ovenpad.com](http://www.ovenpad.com)

## LINCE & HOSTLER

THE HOME CENTRES & DECORATORS

With over 20 years experience we  
pride ourselves in offering an  
exceptional quality of workmanship  
at a reasonable price.

**NO JOB TOO BIG OR SMALL**

- ✦ Domestic and Commercial Work
- ✦ Interior and Exterior Painting
- ✦ Goving Supplied & Fitted
- ✦ Specialist Painting
- ✦ Wallpapering
- ✦ Tiling

Call now for a free no obligation  
estimate...

**01223 812 227 / 01954 211 673  
07952 430 574 / 07952 430 570**

## k-domestic electrical solutions

your local electrical service at home and in your business

**24hr  
CALL OUT**

**Karl Howe**  
**01638 610438 M: 07541 008613**  
Email: [info@k-domestic-electrical.com](mailto:info@k-domestic-electrical.com) Website: [www.k-domestic-electrical.com](http://www.k-domestic-electrical.com)

City & Guilds Qualified

**EAL**

18th Floor, 100 Broad Street, Birmingham, B2 4DB

### PC Problems?

Can't connect to the Internet?  
Can't print? Use slow data?  
Can't send an email or attachment?  
Printer's just not working?  
Want a wireless LAN?  
Worried about security?



THE ANSWER IS HERE!

Let me take the stress out of your PC.  
Fast and friendly service  
with every printing problem!

Same day service - most software is free  
Practical advice also available  
All prices are VAT inclusive

Phone Jeff Mackridge on 01223 811699  
or 07730 708892 (only member)

## BURWELL COMPUTERS

We provide a full range of  
computer repairs and information  
technology support services to  
businesses and home users.

• VIRUS & SECURITY • EMAIL & INTERNET  
• BROADBAND • WIRELESS • ROUTERS  
• NETWORKS • SERVERS • UPGRADES  
• SLIMES • NETWORK CABLING

Tel/Fax: 01638 742702

Mobile: 07901 556895

support@burwellcomputers.co.uk  
www.burwellcomputers.co.uk

Professional Cleaning of Carpets,  
Upholstery, Rugs & Leather

## Safeclean

*The cleaning you've never seen*

Safe Organic  
Cleaning



Organic based cleaning solutions  
Allergy-Out anti allergy treatment  
Guardaman anti-stain protection  
Spot cleaning & stain removal  
Free advice & estimates

Safeclean Cambridge Ltd  
08700 465 528  
www.safeclean.co.uk

## SANICLEAN

DRAIN & PLUMBING SERVICES

R. BRISTLEY Est. 1974  
9 Collings Place, Newmarket

- Drains Unblocked Fast
- Toilets, Baths and Sinks
- Guttering and Downpipes
- Drain repairs and CCTV Surveys
- High Pressure Water Jetting
- Domestic and industrial
- All Work Guaranteed

Telephone:  
Newmarket (01638) 662439  
Mobile 07970 038404

## footprint Signs & Graphics

The Complete Local Signmaking Service

- All aspects of Vehicle Signage
- Window Graphics & Etching
- Safety Signs
- Shop Fronts
- Labels, Stickers & Magnetics
- A-Boards
- Banners
- Full Colour Digital Printing
- Solar Films & Etched Vinyl

Have you a picture you would like on Cars?

07900 606400  
01223 813761

www.footprintdesignsandgraphics.com  
info@footprintdesignsandgraphics.com

## ANDREW HULME

Chartered Accountant



12 Tunbridge Lane  
Hottonham  
Cambridge CB25 9DU  
Tel: 01223 811323  
andrew@hulmeacc.co.uk

- Accounting
- Bookkeeping
- Club Accounts & CASC Assistance
- VAT Returns
- Management Accounting
- Personal Tax
- Business Advice

## J&J DRAKE

Fully approved electrical contractor

- All Work Certificated in Accordance with NICEIC
- Free no obligation quotations
- All aspects of electrical work undertaken such as re-wires, Periodic test and inspections, maintenance calls, New build installations.
- However small you may consider your job it will be treated with the same attention to detail as every one of our jobs.

## Your Local Electrician

Unit 24, Hall Barn Road Industrial Estate, Isleham, Ely, Cambs. CB7 6RJ  
Contact us on: 01638 781567 / enquiries@jandjdrake.co.uk

**Sure Start  
Children's Centres**

What's on for **FREE** for families with children under five at Bottisham Children's Centre, 17 Lodge Road, Bottisham CB23 9DL

**Breast Friends** Every Thursday 11.00am to 12.00pm. Support for breastfeeding Mums. Just turn up!

**Sun Dads!** For dads and male carers and their under 5's. Every third Sunday of the month at Burwell Sports Centre 10.30 to 12.30pm. With bouncy castle, ride-ons and free bacon butties! No need to book, just turn up!

**Multi-sports** Every Friday 10.30am to 11.30am at Burwell Sports Centre. A variety of different sports to keep your under 5 fit and healthy. Just turn up! Term Time only.

**Well Baby Clinic** Every 1st and 3rd Tuesday of the month 12.30pm to 2.00pm. Have your baby weighed and have a chat with a Health Visitor for any concerns.

**Little Movers** Every Wednesday 12.30pm to 2pm at Bottisham Children's Centre. Birth to 2 year olds. Come have a coffee and chat with a health professional and Children's Centre staff. Just turn up!

**Stay & Play** Every Monday 10am to 12noon at Bottisham Children's Centre. Free play session, support and information. Just turn up!

For more information call us on 01223 507152  
bottishamchildrenscentre@cambridgeshire.gov.uk  
www.cambridgeshirechildrenscentres.org.uk



**Ceramics Painting Parties**

**Sparkles is a mobile ceramics painting party service.**

- 1 Choose your venue
- 2 Select your package
- 3 Sparkles will run your ceramics painting party
- 4 Your masterpieces will be collected, glazed & fired
- 5 Your finished pieces will be wrapped & delivered back to the Party host

To book a party call Emma on: 011321  
Or email us at [ed@sparkles.co.uk](mailto:ed@sparkles.co.uk)  
Visit our Website at [www.sparkles.co.uk](http://www.sparkles.co.uk)



- Highly qualified, caring and dedicated staff team
- Outstanding Early Years Curriculum inc. Yoga, French & Forest Kindergarten
- 2 miles to Newmarket & A14
- Health promoting nursery
- Holiday and breakfast clubs
- Free term time only government funded places for 3 & 4 year olds



15 High Street, Southworth, Newmarket, Suffolk, CB8 9TH  
Come and see the difference... call 01638 507178 or [www.oshd.co.uk](http://www.oshd.co.uk)



**Saffron Salt  
Supplies**

- Water Softener Salt**  
Salt tablets in 25 or 10kg bags
- Block salt** in 2x4kg packs
- Dishwasher Salt**  
Granules in 10kg bags
- De-icing Salt**  
White crystal in 25kg bags

delivery **FREE** to your door  
visit our website for full listing  
[www.saffronsalt.co.uk](http://www.saffronsalt.co.uk)  
Place your order by phone  
07990 581815 or email  
[info@saffronsalt.co.uk](mailto:info@saffronsalt.co.uk)

**STEPWISE FOOTCARE**

Vivien Honeyborne-Martins  
MRCPsych (Dist) and MRCP (Gen) Registered



**Clinic-based Chiropody/Podiatry**

- Chiropody
- Biomechanical assessment
- Insole/orthotic therapy
- Children's foot problems

7 Swellham Road,  
Burwell,  
Cambridge  
CB25 0AN

Tel: 01638 741973 / Mobile 07500 396676  
[stepwise-footcare.co.uk](http://stepwise-footcare.co.uk) [stepwise@stepwise.co.uk](mailto:stepwise@stepwise.co.uk)



Showroom opening hours:  
Mon to Thurs 9am-4pm  
Fri and Sat 10am-3pm

22 years of Danish expertise and craftsmanship  
Come and buy direct from our factory  
Beautiful fabrics - superb quality - great prices  
Friendly efficient fitting services  
Curtains - Blinds - Poles - All soft furnishings

High street premises outside our showroom, just off the A14  
25 West Lane, Sutton Park, Easing, Newmarket, CB9 7JN  
Tel: 01638 578710 [www.starcurtains.co.uk](http://www.starcurtains.co.uk)



## CAMBRIDGESHIRE HEARING HELP

### Free Demonstration of Hearing Help Equipment

A chance to look and try

Telephones, TV amplifiers, alerts and more

Friday 21<sup>st</sup> March 2014 10 am to 12.30 pm

AT SCOTSDALE'S GARDEN CENTRE, GREAT SHELFORD



## Alan Heath ADI



Fully Qualified Driving Instructor.

Dual Control Car Very Competitive rates

All Enquiries: 01223 811181 or 07824 905177

## R & S SERVICES

### PICTURE FRAMING

For all your framing requirements including  
Tapestries, Notice Boards, Certificates,  
Ready-made Frames and Mount Cutting

Rear of:

128 Fulbourn Old Drift  
Cherry Hinton  
Cambridge CB1 4LR

Proprietor:  
Roy Northrup  
Tel: (01223) 243077

## Parish Council Notes

Parish Council have been trying to get someone from David Wilson Homes to meet on site regarding the footpath through Ox Meadow linking up to the High Street as we did not think that their contractor had adequately cleared all the weeds etc which were now taking over. There are also concerns that the line of the old path is too clear and needs removing to encourage people to use the new path and prevent a build up of mud. Carrying on with footpaths, after a query from a resident, we have spoken with the landowner regarding the footpath from Ancient Meadows to Beechwood Avenue. He has agreed that the kissing gate, which prevents pushchairs and cyclists using the path, could be moved so that it is on the footpath that leads to Swaffham Road. The fence could then be moved so that no one could access his land but there would be a clear route through for pedestrians. Councillor Bryant will liaise with the County Council on this matter.

Following on from last months report County Councillor Shuter confirmed to us that Highways are conducting a survey on traffic leaving the A14 at the Quay roundabout and we await further news on this.

At our last meeting our District Councillor, Kevin Ellis produced a report detailing recycling performance comparisons between October and December 2012 and 2013. Kerbside recycling had increased from 755 to 1795 tonnes whilst total recycling had jumped from 2293 to 3864 tonnes, a 21.5% increase. Discussions are on-going on how we can further recycle items like plastic bags and wrappings.

When the wheelie bin service was introduced last year several residents enquired as to whether they could have a second bin per property. As the District Council receive many such enquiries they have now approved the provision of additional bins for garden waste only in return for payment of an annual licence fee. This is set at £48 and will be reviewed annually. This has only been announced in the last few days and Parish Council have not had the opportunity to discuss this yet.

In last months Cresset we reported on the success of the electrical recycling kerbside collection. I can confirm that a new collection date of 22nd May has been set. There will be much more information nearer the time but please keep your old electrical items until then. The 22nd May is also the date of the Parish Council Annual Meeting which will be held at the Royal British Legion at 7.30pm. Please put the date in your diary but again there will be further details nearer the time.

At this stage there is nothing new to report on the Bell Road Masterplan as everything stalled when the developers withdrew. As you are aware they are now back on board and we await further news.

Parish Council discussed the recent open meeting held at the Village College regarding the facilities there. Parish Council are yet to have a further meeting with the Head but have had preliminary discussions with David Earle, one of the school governors regarding play facilities. It was noted with some disappointment that there was no turn out from those under the age of 45 who were the ones whose children we were looking to get facilities for and this is a concern.

We have asked Debbie Wildridge from Foundation East to write an article on Community Land Trusts (CLT's), which is in this months Cresset explaining exactly what they are and how communities can use them so please take a look at that.

I have been asked once again to remind residents about parking safely in the village particularly around the shops and to remember that double yellow lines are there for a reason. Also, those with gravel driveways please make sure that stones are not impeding the footpath as I have had some complaints about that also.

*(Parish Council Notes continued on page 26.)*

(Parish Council continued.)

Lastly one of our Parish Councillors, Ruth Easthope has decided to stand down after 4 years and we thank her greatly for her contribution. However, that now leaves a vacancy and I ask that anyone interested please contact either myself or the Chair Christine Bryant. With the proposed development of 50 more houses off Bell Road, and the installation of traffic calming, provision of a new cemetery and play facilities for the village, there is a lot happening in the village. If you feel you can contribute to these important community issues, we would like to hear from you. Please contact either Christine Bryant – Chair of Parish Council or the Parish Clerk.

Meetings are held the first Monday of the month in the Poppy Room at the Royal British Legion and begin at 7.30pm. There is an opportunity at the beginning of the meeting for residents to ask questions of Parish Councillors.

## PLANNING NOTES

13/01061/FUL, 27 Bell Road; Dropped kerb; NEW APPLICATION

14/00029/FUL, 28 Peacock Drive; Single storey side and two storey rear extension;  
NEW APPLICATION

## COUNCILLOR VACANCY

There is currently a vacancy on the Parish Council.

If you wish to apply or find out more information please contact:

Christine Bryant – Chair • Tel: 811767 or Claire Fullwood – Clerk • Tel: 07914 219732

(e-mail: [clerk@bottishampc.org.uk](mailto:clerk@bottishampc.org.uk))

## JEFFREY D. WICK

PAINTER / DECORATOR

INTERIOR / EXTERIOR

30 YEARS EXPERIENCE

FREE ESTIMATES

OAP Discount

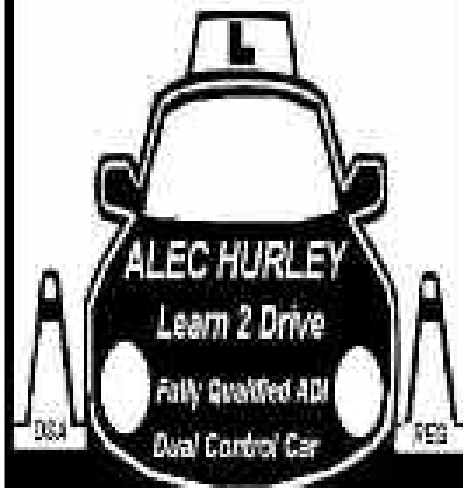
Reliable & Professional service

Phone: 01223 813762

Mobile: 07788 165676

11 Heath Road  
Swaffham Bulbeck  
Cambridge  
CB25 0LS

[www.alecslearn2drive.co.uk](http://www.alecslearn2drive.co.uk)



TEL 01223 813161

Mob 07905 363121

## Making the most of Community Assets

### What is a community?

We all have communities of place – maybe we share the same street or neighbourhood. Then there are communities of interest – groups brought together perhaps because we go to the same church, have kids at the same school, know each other through work or social clubs and societies.

But not all of these separate communities interact with each other. Sometimes, there are people on the same street that we've never spoken to because in our busy lives our paths don't cross very often.

**So what is involved in a Community Land Trust (CLT)?** A Community Land Trust (CLT) is a not for profit community-based organisation that delivers housing and other community facilities at permanently affordable levels for local people.

Most importantly because a CLT is not-for-profit and run by volunteers the benefits always go to the community. Often a small steering group of 6 or 7 people will get together to set up the legal structure, negotiate the transfer of assets (land or property) and tell everyone what is happening. Later other members of the community will want to join to have a say in managing the assets and CLT membership for only £1 will give people a chance to vote and take part. A CLT is community-led and community-owned and must be democratic and open and will have a set of legal rules to make sure this happens.

It will have ownership of some permanently affordable assets for which the CLT has long-term stewardship through an 'asset lock'. This is a crucial feature of a CLT and usually starts with some form of charitable donation, low valuation of land or property or the use of a pot of money set aside for community use.

In order to manage those assets it will be important to identify a viable source of finance and many CLTs manage affordable housing – either by operating the homes themselves or working through a housing association. The benefit to the community is that affordable housing, suitable to its location, where it is badly needed, is owned and managed locally but also provides an income.

Whilst the original purpose for a CLT can be very varied – to provide recreational facilities, a cemetery, surgery, workspaces, even an urban farm in one case, there will always be a need to have a financially sound business plan. Part of the project can be income generating for example thereby providing for the desired but perhaps otherwise unaffordable parts of the scheme.

**And why might a CLT be the answer?** There are many advantages to setting up a CLT.

- The "asset lock" means that no income a CLT gets from its assets makes a private profit for individuals, but it is all ploughed back into the CLT to be used for the benefit of the community.
- CLTs tap into local expertise, knowledge and networks, which helps to increase wider community engagement and to identify local needs accurately. CLTs succeed where there is a determined steering group with the ability to create strong community support.
- Volunteer time and effort can reduce development and running costs of a project, often enabling something to go ahead that would not be viable otherwise.
- CLTs can raise money through community share issues, which give local people an opportunity to invest in local projects. (Community Assets continued on page 28.)

**(Community Assets continued.)**

- People involved in running CLTs develop knowledge and skills that increase their confidence and create new life opportunities.

When people start talking to one another and start prioritising what needs to be done locally and find ways to work together to achieve local goals, they can come up with solutions which involve those different communities and draw everyone together.

And they find that there are shared common values that will overcome scepticism and suspicion, that will encourage others to get involved, that will make others want them to succeed and that it will be worthwhile doing because by using a Community Land Trust the benefits of what is done now will be protected for future generations.

Once a CLT is established there is no end to the projects the community can tackle given time, enthusiasm and determination!

*Debbie Wildridge, CLT Manager • [www.clteast.org](http://www.clteast.org)*



**Copy deadline for the next issue is 14 March.**

*Please send material to the editor at  
[cresset@bottishampc.org.uk](mailto:cresset@bottishampc.org.uk)*

## MOBILE FOOT HEALTH PRACTITIONER

For professional treatment of ALL foot conditions including:

- Toe nails trimmed & filed
- Corns and hard skin removal
- Ingrowing toe nails
- Athletes foot & fungal nail infection
- Verrucae & warts



For an appointment in the comfort of your own home contact:

**HELEN BRATTEN, MCFHP, MAFHP**  
Tel... 01638 724865 or 07776 172056

Member of the British Association of Foot Health Professionals



# LET'S DANCE

Come and join us dancing on Saturday evenings  
in the Main Hall at Bottisham Village College.

**15th February, 8th March,  
5th April, 10th May**

We will have music for Ballroom, Latin American and popular Sequence dancing. The cost is £10 per couple, which includes interval tea/coffee. You are welcome to bring along your own refreshments. There is ample parking on site. For further information please contact: **Frank and Sue Hancock, 01638 741159** or check out our website: **[www.letsdanceclub.org.uk](http://www.letsdanceclub.org.uk)**

\*Let's Dance Club is a "not for profit" organisation established to provide dances for the community.

## Hilton Park Care Centre

BARCHESTER HEALTH CARE

We cater for:

*Young Physically Disabled • Elderly Nursing • People living with Dementia • Mental Health*  
A Centre of Excellence • Newly Refurbished Spacious Accommodation  
Ensuite with all Amenities • Beautiful Views • Spacious Grounds with Wildlife  
Wide Selection of Delicious Food • 24-hour Qualified Staff on Duty  
Specialised Equipment: Hoists, Assisted Baths, etc.  
Activities Tailor-made for the Individual • Nursing Care Planned using the Activities of Daily Living

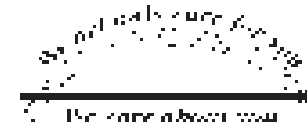
Open Visiting Times

**Our Home is Your Home**

Tel: (01223) 811256

Fax: (01223) 812692

Please contact:  
Home Manager



Bottisham  
Cambridge  
CB25 9BX





My love for dogs

### An alternative to Kennels

A personal, caring approach to dog care.

In our home, your dog will receive two hour-long walks every day as well as treats, socialisation with other dogs and the administration of any required treatments.

- Fully insured and police checked
- Licensed by 5th Cambs. District Council.

For further details call Amanda on 07993 806750

Based in Stangle Morden near Royston

## BURY CATTERY

*Offer  
Full Boarding  
Services for  
Cats only*

CAMBRIDGE  
811945



## FINISHING TOUCH

- \* Gifts for all occasions
- \* LAZYJACKS Stockist

Open  
Mon - Fri, 10am - 5pm  
Sat, 10am - 4pm

59 High Street, Burwell  
Tel: 01638 744377

*Winter Clothing and Footwear for the season now in.*

## MOVES FITNESS

Fit to live life - For the rest of your life!

Aerobic exercise with a difference

GUY VILLAGE HALL

Every Monday 8.30pm - 9.30pm

EVERYONE WELCOME!

£5.00 per session

Exercise really can be fun!

Contact Neil Mace for more information: 01223 811121

Find us on Facebook



and then visit us on  
www.movesfitness.co.uk



Your friendly neighbourhood fitness class

## NEW

### Dance Workout!



Botolph Claydon Sports Centre, Lode-Rit  
Thursday 7pm - 8pm

£5.50 Per Class  
Suitable For All  
Fitness Levels



Inspired by the sparkle and passion of Bollywood, Belly Dance and being the main inspiration for Zumba, Belly Fitness is the new way to slimmy groove and dance Belly style! With all our instructors trained from India itself! Come along to spice up your lives and get fit the fun way!

CLASSES RESUME ON JAN 10TH

explosionsarts@aol.com

Tel: 07951 959345

www.Explosionsarts.co.uk

# T P M



Taylorred  
Property  
Management

Your letting property is a key asset in your life, ARE you getting full value from it?

If you are not and you want a service that will release it's full potential and a free rental appraisal then come to the people that are able to offer you a "Taylorred" package to suit your needs.

We offer a full comprehensive property management service, just as though the property was our own all at affordable rates to suit you:

**FREE** Energy performance certificate

**FREE** Initial letting fee

For your own personal service contact:

Steve Taylor on: 01638 741717 or 07753 272765 or email [steve@taylorredpm.co.uk](mailto:steve@taylorredpm.co.uk)  
9 Station Gate, Burwell, CB25 0DZ

## Irene Sarll (1919 – 2014)

Valerie and Deame and their families would like to say thank you to everyone who came to Irene's funeral service in Holy Trinity Church, Bottisham on Wednesday 5th February 2014. The service was conducted by the Reverend Sue Giles.

They would also like to say a big thank you for the many cards sent in commiseration. Irene, also known as Rene, lived happily for more than seventy years in Bell Road, Bottisham. She had many dear friends, some of whom were able to attend the funeral. She was looked after in her later years by very kind friends and neighbours and also wonderful carers who work in the community. She died peacefully in Bramley Court Care Home in Histon.

We would like to also thank the many members of the Indoor Bowls Club who came to her funeral.

Thank you to Katie at the Royal British Legion Club for providing the refreshments.

Have you thought of advertising your business in *The Cresset*?

Email the Editor for details: [cresset@bottishamipc.org.uk](mailto:cresset@bottishamipc.org.uk)

## ARCHITECTURAL DRAWINGS

FOR

PLANNING & BUILDING REGULATION APPLICATIONS

NEW PROPERTIES, EXTENSIONS, LOFT CONVERSIONS ETC

CONTACT US now to arrange a **FREE** on-site meeting at your convenience to discuss your project.

**ELY DESIGN GROUP**  
*Architecture by Professionals*

[www.elydesigngroup.co.uk](http://www.elydesigngroup.co.uk)

01353 649649

[mail@elydesigngroup.co.uk](mailto:mail@elydesigngroup.co.uk)

## Bottisham and District Gardening Club

At our January meeting we had a very interesting and informative talk from Stephen Poysner. He described the processes involved in getting honey from the hive to the table.

Scout bees leave the hive and look for the best flowers and plants, on their return they report back to the other bees and tell them where to go. If gardens nearby have just a few flowers they will tell them to go further, say to a rapeseed field which will have a bigger quantity. Bees collect nectar and convert it into honey, the flavour will depend on which flowers or plants the bees feed from. Each variety will produce a different aroma, flavour, colour, texture and speed of setting. A hive of bees need to visit 2 million flowers and fly about 43,000 miles to make 1lb honey. Bees do an incredible job but the beekeeper has to do even more to process the honey. When removing bees from the frames containing the honey they use a leaf blower for 30 seconds. Regarding the labelling of the jar he detailed all the rules he has to abide by or risk prosecution. The weight of honey has to be exactly 1lb. Also a best before date has to be displayed but as honey never goes off what date do you put.

Our next meeting will be on Tuesday 25th March and Terry Raynor will be giving a talk about Terwins Seeds. Visitors are welcome to come along to the British Legion Poppy Room at 7.30pm, further details of our programme for 2014 can be found at [www.bottishamgardeningclub.co.uk](http://www.bottishamgardeningclub.co.uk)

## Seed Exchange

*A big thank you to everybody who participated in our fourth annual seed exchange in the Poppy Room in February.* A number of people braved the grim winter weather and enjoyed swapping seeds and gardening tips over the excellent tea and home-made cake generously provided by Bottisham WI. In addition to donations of seeds there were also many lovely raffle prizes and some classic gardening books on offer. If you missed the afternoon there are still some seeds available so please do come along to the next Gardening Club or WI meeting to make your choice! A donation from proceeds will be made to the Poppy Appeal. Full details will be available at the next WI and Gardening Club meetings.

Do let us know how you get on with growing your seeds and if you have spare plants then please do bring them along for our plant sales later in the year or to exhibit at the Annual Show at the Royal British Legion on Saturday 13th September.

*Jennifer Clark*



# ANDY'S

## MEN'S HAIR DESIGN

### LONGMEADOW

55 LONGMEADOW • LODE • CB25 9HA  
(opposite phone box)

*Appointments*  
**01223 812444**



The Hairdressing Council  
State Registered Hairdresser  
Master Craftsman

**EASY PARKING**

## Italian Native Speaker

Bachelor of Arts in  
Interpreting and Translation  
in English and French languages

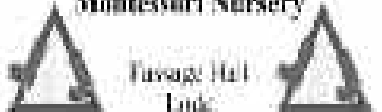
### Offers:

- Language Tuitions
- Proof-reading
- General and Technical Translation
- Exams Preparation

From £15 per Hour

**Call Daniela On:  
07940 541 558**

**Little legs of Lode  
Montessori Nursery**



Passage Hall  
Lode

We have spaces for children aged from  
2 years onwards each morning in term time

The Montessori method allows children  
the freedom to be creative, to learn and to  
develop at their own pace in a calm  
environment.

Please contact Sharon for a prospectus  
or to arrange a visit.

daniela.muskall@btinternet.net  
Tel: 07571 12146

## QUALIFIED LANGUAGES TEACHER

Available for tutoring  
**FRENCH** and **SPANISH**  
to  
GCSE and A-Level

*Resident in Bottisham*

Contact **Lucy Beharrell**  
Tel: **01223 811427**  
Mob: **0774 552 1204**  
E-mail: **lucy@yates.net**

## GCSE Maths Tutor Ben Horwood MA

**22 Woodditton Rd  
Newmarket  
01638 662079  
07753 264135**

## Sales, Wants and Swaps



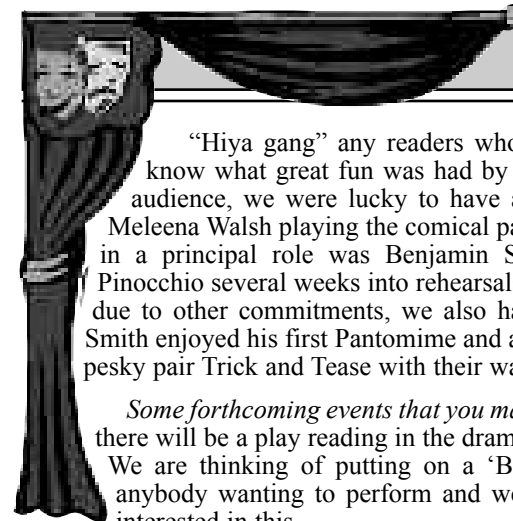
**IF YOU HAVE ANYTHING TO SELL OR WANT TO BUY OR EVEN TO SWAP, THEN THIS PAGE IS YOURS TO USE.** Please send details of item, price and landline phone number to the Editor at the Cresset. You can e-mail details to [Cresset@Bottishampc.org.uk](mailto:Cresset@Bottishampc.org.uk). Post them to 94 High St. (or put them through the letterbox). Alternatively you can telephone 811402 and leave the details. Entries by 12th of the month for next months issue. Max 5 items.

DESCRIPTION	PRICE	TEL
Boxed Cricut Gypsy plus case, car charger & 6 linked cartridges	£300	811783
Crecut Create cutting machine plus spare blade & spatula	£150	811783
10 Crecut cartridges	£25 each	811783
Tasco telescope with moon map & manual VGC in box	£18	812593
United Office laminator, new in box	£8	812593
Lamp table 20"x20"x20" with drawer VGC	£20	812593

Copies of the **ECONOMIST** and **NEW SCIENTIST**  
one week after publication, OFFERED continuously.

811679

## Bottisham Players



“Hiya gang” any readers who came to our production of Pinocchio will know what great fun was had by the cast and back stage crew as well as the audience, we were lucky to have a few new faces in our cast these included Meleena Walsh playing the comical part of Jiminy and making his first appearance in a principal role was Benjamin Shackleton, Benjamin took on the part of Pinocchio several weeks into rehearsals when the original Pinocchio had to pull out due to other commitments, we also had a new chorus member join us, Jonathan Smith enjoyed his first Pantomime and a fantastic time was had by all especially that pesky pair Trick and Tease with their water pistols.

*Some forthcoming events that you may wish to take part in:* • Tuesday 11th March there will be a play reading in the drama studio at Bottisham Village College 7.30. • We are thinking of putting on a ‘BOTTISHAMS GOT TALENT’ evening for anybody wanting to perform and we would like to know if anybody would be interested in this.

And don't forget we are always looking for new members. Those who like to perform on stage and those who would rather not be in the lights but behind them.

Any enquiries email [april.cook@btinternet.com](mailto:april.cook@btinternet.com).

**Copy deadline for next issue is 14 March.**

*Please send material to the editor at [cresset@bottishampc.org.uk](mailto:cresset@bottishampc.org.uk)*

# Fed up Painting Your Roofline?

Does your roof suffer with any of the following?  
 Flaking Paint - Rotten Timber - No Ventilation  
 Blocked or Leaking Gutters - Missing Bricks  
 Over 10 Years Old?



**Stop! Replace it now!**  
 Replace it with long-lasting, higher quality timbers, soffits & eavings with a 50 year product guarantee. Full replacement - no taping over. Ventilation, guttering, downpipes.

CALL NOW for your FREE, written, cover and no-obligation estimate.

**01223 258049**

**PROJECTS 4 ROOFING**

[www.projects4roofing.com](http://www.projects4roofing.com)

**Electrician**  
**J.W.Electrical**  
**Competitive Prices**  
**Free Estimates**  
**Fast Friendly Service**  
**Part P Approved for Building Regulations**

**07804 896861**  
**01223 574262**



## *Bottisham Community Library*

We have recently had a positive meeting with the Principal and a senior member of staff at the Village College after a period of little communication with them. We are hoping to enter into a more regular and equitable payment system and are also looking at opportunities to obtain grants to purchase books which will be beneficial to us both. The College is hoping to provide WIFI throughout the site soon which will enable the Library public computers to be on-line and provide a necessary service to the community - we are sadly the only one of the 10 locally run libraries presently not on-line.

We have recently received statistics showing that numbers coming to the library are consistent with 2012/2013 and that book borrowing continues to remain similar in most categories. There is a slight drop in the issues of Junior Fiction and Young Adult book borrowings and we hope to improve these figures. There are many new books in these categories sitting on the shelves waiting to be borrowed! The most promising statistic is in the number of books reserved for borrowers - this must surely be due to the weekly deliveries we now have. I ordered a book on a Thursday and it was there the following Tuesday.

Our next Triangle Book Sale will be on Saturday 26th April. We should be very pleased to receive any good quality paperbacks that you have finished with for this sale. Hard backs are also welcome as donations and these will either be placed on the shelves for others to borrow or placed on our sales trolley in the library.

*Sylvia Overton*

## *Public Transport Matters*

The lack of evening and Sunday buses is continuing to cause problems for people not just for their social lives but also for their employment. I repeat that some people do not just work 9-5/Mon.-Fri. I have again contacted National Express ref. the 727 coach service as even having something stopping on the A1303 would be of use to some people. As we can now buy National Express tickets from the Post Offices locally it would make sense. I have also contacted Stagecoach regarding their ramshackle buses! They do rattle noisily! I am assured by a message from their garage staff that they no longer have shock absorbers but the latest pneumatic suspension gear! They have checked them out and they are fine. But on some buses we still rattle and roll.

Various concerned people have written in the last few Cressets regarding the problems of cars parking on busy streets in the village. Bus drivers cannot pull up to the kerb and people have to step into the middle of the road to flag the bus down. A recent driver who nearly missed us said we have to be 6 foot tall and jumping up to be seen! Some elderly people now use the Dial a Ride services - the Cambridge one (£10 per annum membership) visits Burwell, the Swaffhams, Bottisham and Lode on a Friday - 01223 506335. The Dial a Ride service from the Newmarket direction (£5 annual membership fee) is available more on demand according to availability. You need to ring 01638 608080. They also run excursions, offer vehicle hire to community groups and have a community car service. There is an idea being promoted that perhaps someone locally could organise a community bus service for the evenings and Sundays. Any offers?

The present weather conditions show how vulnerable our public transport systems are to bad weather. People stranded and unable to get to school, work, shopping etc. The Dutch have organised their sea defences very well since they were devastated by floods in 1953. Floods that I remember very well as I was living at Leigh on Sea opposite Canvey Island which was so badly affected.

*(Public Transport Matters continued on page 37.)*

### **ALAN R. COOPER**

BSc(Hons)Pod. M.Ch.S

**Podiatrist/Chiropodist - Newmarket**

(Est. RC Cooper SR Ch.1934)

Routine Chiropody & Home Visits  
 Ingrown Toenails by Local Analgesia  
 & Footwarts by Cryosurgery (freezing)  
 Briomechanical Assessment + Orthosis  
 Instruments sterilised by Autoclave

**TELEPHONE 01638 662840**  
**4 Market St., Newmarket CB8 8EE**

### **GERMAN LANGUAGE COACHING**

Native German Speaker  
 Qualified Teacher  
 Coaching to GCSE level

Karin Hulme 812669

### **Jaze accountancy Limited**

Management Accounts

Statutory Accounts

Bookkeeping

Payroll

CIS

VAT

Personal Tax

Corporation Tax

Accountancy Systems

Company Secretarial Services

Competitive rates to save you time and money

**Call Julie on 07801 735012**

e-mail: [books@jazeaccountancy.co.uk](mailto:books@jazeaccountancy.co.uk)

[www.jazeaccountancy.co.uk](http://www.jazeaccountancy.co.uk)

Company registered in England and Wales, Limited

**Body Image • Beauty • Tanning • Gifts**

We are a well-established  
Beauty & Tanning Salon  
Incorporating a Gift Shop

Beauty Vouchers  
Starting from £5

**SALON & GIFT SHOP OPENING HOURS**

MON, WED & THU	10am - 7pm
TUE & FRI	10am - 6pm
SAT	10am - 2pm

www.bodyimage-cambridge.co.uk

**T: 01223 880 881** 10A High St, Fulbourn, Cambridge CB21 5DH

**BOTTISHAM**

**SCHOOL OF MOTORING**

Tel: 811556

*All qualified instructors  
with extremely high  
1st time pass rates*

**PREMIER INVESTMENT MANAGEMENT SERVICES LTD.**

INDEPENDENT INVESTMENT ADVISERS  
Authorised & Regulated by the Financial Conducts Authority

Specialist in Cash Isa's, Junior Isa's, Stock/Share Isa's,  
Investment Planning, Cash Deposit Reviews & Stock-broking Services

To arrange a free consultation ring 01223-882422 or email  
pims@globalnet.co.uk or visit www.pims-uk.com

**(Public Transport Matters continued.)**

The Staine Hundred Chronicles put together by Peggy Watts of Quy from the local papers of the 1800s are very interesting. The local train times between our villages and Cambridge and Newmarket are all listed. On June 2nd 1884 the new line between Cambridge and Fordham was opened to much flag waving and cheering! There were first, second and third class carriages - the third class even had cushioned seats!

It is reported that the 9-mile tramline link between Edinburgh airport and the city centre should open in May. The Crossrail project in London could cause congestion problems as it is projected that about 750,000 arrivals and departures could take place daily decanting into Bond St., Tottenham Court Rd and Farringdon by 2026. The HS2 arguments rumble on - now there is talk of a secret report as to whether it would give value for money. A legal challenge to the project by Bucks. C.C. and others has failed. But in France they are getting on with their high-speed (200mph) TGV trains train routes - from Tours to Bordeaux, into Brittany and on the Mediterranean coast. The mayor of Bordeaux sees it as a great opportunity to have such a good 2 not 3-hour link to Paris and that it will create 25,000 jobs in small and medium sized businesses.

Testing is taking place in Germany of the planned new Class 700 electric trains which we are due to have through the Thameslink plan in 2016. They will have no sliding door - you just walk through - they will be air-conditioned and carry about 1,700 people. By 2018 we should be able to cross the Thames to Blackfriars and Gatwick. Siemens will create up to 2,000 jobs in the UK in building the new carriages. And Bombardier has secured the contract to build the trains for the Crossrail project.

Nenta train tours for days out or short breaks-01692 406152. • Rail info: 08457 484950 • Traveline: 0871 200 22 33

Happy travelling!

*Paddy James*

**Cambridgeshire Fire and Rescue Service**

Every year, Cambridgeshire Fire and Rescue Service raises thousands of pounds for The Fire Fighters Charity – and we couldn't do it without the support of residents throughout the county so we would like to say a big *thank you!*



This month, in support of the charity, a number of fire stations across the county will be holding car washes - so visit [www.cambsfire.gov.uk](http://www.cambsfire.gov.uk) or our social media channels to find out which stations near you are taking part.

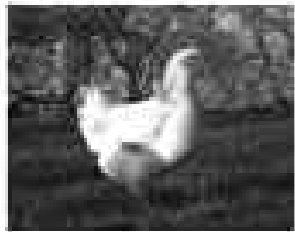
Registration is now open for the annual Ladies Driving Challenge on Sunday, May 11, at Alconbury Airfield. More than 300 women will get behind the wheel of super-sized vehicles and if you fancy having a go and would like to take part sign up quickly! For more information and to register, please email [ldc@bedsfire.com](mailto:ldc@bedsfire.com) or call (01234) 845130.

Finally a huge thank you to all who supported our clothing bank challenge in January to see which station could collect the most unwanted textiles to raise cash for the charity – we're eagerly awaiting the results.

**Housekeeping!** Do make sure that **fire safety** continues to stay at the forefront of your mind in March – and don't forget to regularly test your smoke alarm by pressing the button, ideally monthly and keep a diary note.

To those with open fires, **avoid** burning resinous wood as **soot** accumulates more rapidly. Make sure that you have your **chimney swept** annually – more frequently if you do burn wood. Ensure that the fire has **died out** before going to bed. **Always** use an approved fire or spark guard. *To find out whether you are eligible for a free home fire safety check, call 0800 917 99 94.*

## Cambridge Poultry (Point of Lay Chickens)



Laying Chickens and

Free Range Eggs Available

Contact: 07505 619163

Bottisham Place, High Street  
Bottisham



## PET TIME

[www.pettime-petcare.co.uk](http://www.pettime-petcare.co.uk)

Prof. dog and small animal feeding with  
Dog walking  
Dog and small animal home boarding  
Doggy day-care (daycare)  
House and pet sitting  
Pet taxi

Contact us:  
01223 817206

01223 813494 (Swallfham Bulbeck)  
[info@pettime-petcare.co.uk](mailto:info@pettime-petcare.co.uk)

All animals from hamsters to horses cared  
for just as you would want,  
Fully insured, first aid trained and  
police checked.

# Bottisham Sports Centre

## Swimming Lessons

Adult & Child, Junior & Adult Lessons available at Bottisham.

We have an excellent swim school that runs every school  
term, Monday, Tuesday & Thursday 4pm-6pm, Wednesday  
4pm-5pm and Saturday 8:30am-11:30am.

## Fitness Classes at Bottisham

Monday - Bootcamp, Spin & Zumba

Tuesday - Aqua, Pilates, Circuits &  
Coach lane

Wednesday - Bootcamp

Thursday - Pilates, Aqua, Kettlebells

Friday - Bootcamp

## Kids Activities

Kids Dance Tuesday 4pm-5pm

Look out for our fun packed holiday activity brochures.

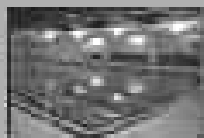
For more information on any class or activity please contact  
the centre. Or alternatively visit our website and take a look  
around.

Bottisham Sports Centre

Lode Road, Bottisham, CB25 9DJ Tel: 01223 811121

Web: [www.bottisham.org/sportscentre](http://www.bottisham.org/sportscentre)

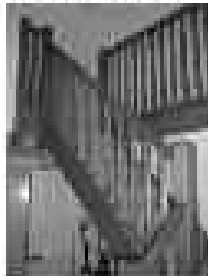
Email: [sportscentre@bottisham.org](mailto:sportscentre@bottisham.org)



## E.J. DENSTON KITCHENS & CARPENTRY

All aspects of Carpentry & Joinery  
New Build 1st & 2nd fix carpentry  
Purpose made cupboards, wardrobes  
& Bookcases

Kitchens supplied & fitted  
Renovations & small build works



BOTTISHAM 01223 813323  
Mobile 07711578687

## PAINTING AND DECORATING

## PROPERTY AND GARDEN MAINTENANCE

CALL STEVE

on

01223 812434

or

Mobile 07445 459957



## 1st Bottisham Scout Group Hiring Service

Bottisham Scout Headquarters is available for hire for children's parties, dance lessons, meetings, keep-fit, jumble sales, drama, music practice sessions etc.

*For hall hire contact Adam Paul*

*adampaul@btopenworld.com • 01223 813531 • MOB 07841 930065*

We also have a trailer and a trailer tent available for hire.

*For equipment hire contact Peter Terry: 812684*

Copy deadline for the next issue is 14 March.

*Please send material to the editor at cresset@bottishampc.org.uk*



## JANE NEWBURY EX ROYAL BALLET A.I.S.T.D. (C.B.) SCHOOL OF DANCING

Dance classes in Swaffham Bulbeck School Hall

### MONDAYS

Nursery Movement — 3:00-3:30pm  
Junior Ballet — 3:45-4:15pm  
Junior Modern Dance — 4:15-4:45pm  
Intermediate Ballet — 4:45-5:15pm  
Senior Modern Dance — 5:15-5:45pm

Senior Ballet — 5:45-6:30pm

Ladies Ballet — 6:30-7:30pm

### WEDNESDAYS

Dance Club A — 4:30-5:30pm

Dance Club B — 5:30-6:30pm

Adult Tap Class — 6:30-7:30pm

For further details please telephone 01223 812154

# Sab



## Bottisham

## YOUR LOCAL AGENT

Personable and proactive service

Call for FREE advice and valuations

Selling, letting or investing

we are here to offer sound professional help

Call today for more on 01223 452170, 07714 464542 or 01223 813515 [adrian@sab.co.uk](mailto:adrian@sab.co.uk)

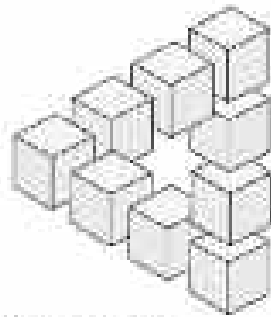
Circle 10  
01223 302170

Circle 11  
01223 452000

Circle 12  
01223 811752

Circle 13  
01223 247222

Circle 14  
01223 701000



### INDEPENDENT FINANCIAL SOLUTIONS

- You know that the State Pension is not enough, but you don't know what it will provide!
- You want to save for your retirement, but you don't know what you will need!
- You wish to protect your family against financial disaster, but don't know what cover you require!
- You need to make your money work hard, but don't know which option is best for you!
- You would like to reduce your tax bill, but you don't know how!

- Whether you own a company, are self-employed, employed or retired, we can help!
- We don't believe in adding to your problems.
- We believe in clear and simple solutions.

Let us provide you with an **INDEPENDENT** review of your financial situation:

Tel: 01638 615343

Fax: 01638 615342

E-Mail: [qc@independent-financialsolutions.co.uk](mailto:qc@independent-financialsolutions.co.uk)  
 Website: [www.independent-financialsolutions.co.uk](http://www.independent-financialsolutions.co.uk)

Registered Financial Advisers, 16 Law Road, Boreham, Chelms, (CM3 4EJ)  
 Formerly: Quince Cooke (with former Independent Financial Adviser & Author Centre)

## Fed up Repairing Your Flat Roof?

Does your roof suffer with any of the following?  
 Leaks - Moss Growth - Cracks or Blister  
 Over 10 Years Old? Stop! Replace it now!



You can always do what is suggested here but you will have to live with the old roof for the rest of its life. If you have a flat roof that is over 10 years old, it is time to think about replacing it. We offer a full range of roofing systems, guaranteed to last for 20 years and more. We will give you a free quote on your roof and help you to decide on the best option for you.

**Free No Obligation Quote**  
 Please to text or call us and we will give you a free quote on your roof and help you to decide on the best option for you.  
**CALL NOW for your FREE** quote, survey and no obligation quote on

**01223 258049**

**PROJECTS 4 ROOFING**

[www.projects4roofing.co.uk](http://www.projects4roofing.co.uk)



## JEFF HUNT

01954 780 999

[jeff@mcarpetcare.com](mailto:jeff@mcarpetcare.com)

- ✓ Carpet Cleaning
- ✓ Upholstery Cleaning
- ✓ Tile & Grout Cleaning
- ✓ Leather Cleaning
- ✓ Oriental Rug Cleaning
- ✓ Carpet & Fabric Protection
- ✓ Allergy Relief Treatment
- ✓ Odour Eradication
- ✓ Stain Removal
- ✓ Carpet Fitting

A Family business since 1980



## Tom Griffiths

### Plastering and Building Services

Plastering - Rendering - Dry Lining - Tiling - Decorating  
 Carpentry - Hard Landscaping - General maintenance

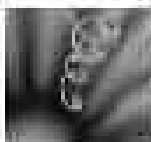
**NO JOB TOO SMALL**

Do your ceilings have 1970's Artex?  
 Do you want to bring them up to date?

For a quick, clean, flat finish give me a call for a free quote.

Tel 01638 482174 or 07765 411662  
 e-mail: [tgbuildingservices@hotmail.co.uk](mailto:tgbuildingservices@hotmail.co.uk)





Remedial Massage  
Effective Muscular  
Pain Relief!

Sports injuries Sciatica  
Frozen shoulder  
Carpal tunnel syndrome  
Back pain Plantar fasciitis

Treating the cause Not the  
symptoms

Techniques: Myofascial Release, Soft  
Tissue Release, Trigger Point Therapy

Jenny P Wilson, Sr. Wilburham  
T: 01223 881899  
E: wilson\_jp11@gmail.com



## ANGLIA GAS & ELECTRICAL SERVICES



Gas - Services - Repairs - Installation

- Gas Boiler/ Central Heating Systems
- Domestic Gas / Dual Fuel Appliances
- Nat. Gas / LPG Landlord safety checks
- Electrical Portable appliance Testing
- Electrical and Plumbing Maintenance

Contact Jim Ferry  
on

01638 741432 or 07786 656458

## Thoughts of a Sports Nut

The penalty shoot-out debacle between Manchester United and Sunderland in the Capital One Cup semi-final, that was billed in some media as the 'worst penalty shoot-out ever', got me thinking about what exactly was the issue with otherwise perfectly competent professionals suddenly finding themselves unable to hit a barn door with a banjo when faced with a modicum of pressure!

It really was the most embarrassing spectacle, especially in World Cup year, with no fewer than seven Englishmen missing their spot kicks! But perhaps we have a small consolation in the shape of the Brazilian Rafael who missed the critical kick to send Sunderland to Wembley. Anyway, a refereeing pal of mine recently attended a lecture by Dr Raj Persaud, the popular writer on psychological matters, who had been looking at research data on the complexities that occur in the minds of penalty takers, in the act, so to speak.

It seems that there are so many behavioural clues exhibited by players in the moment, that you can predict who is set to score and to miss with a reasonable degree of reliability! The first clue is 'timing'. Those who take the most time are the most likely to score; the argument being that the individuals suffering the most stress, and therefore likely to perform the worst, are the ones with the 'get it over quickly' approach. They are so anxious to rid themselves of the pressure that they are unable to stay calm in the moment and this compromises their undoubted skill. 'Hastening'.

Apparently, the English are particularly susceptible to this and it could be that they take some cues from other sports, golf for example, where the longer you take over a shot, the more likely you are to 'choke'. However, there appears to be a key dissimilarity between a football penalty and a golf putt: that is the interaction between the taker and the goalkeeper – a 'behavioural loop' in which both individuals are trying to read the other's intentions.

Another telling factor, and another main difference between a typical English penalty taker and his European counterpart, is the direction of the player's face as he walks back for his run-up. Face the goalkeeper and you appear more confident, less stressed and more likely to score, at the same time, transferring the stress onto the goalkeeper. Turning your back on the custodian is indicative of lower confidence, greater stress, raised belief in the mind of the goalkeeper, and less likelihood of scoring. 'Hiding'.

Let us hope that the England players, or at least the manager, might have attended a similar lecture before they board the plane for Brazil in June and take the hint about the dangers of 'hastening and hiding', because we all know – don't we – that we'll be suffering a penalty shoot-out at some point!

Talking of which, in the meantime, the intrepid Bottisham crew (Messrs Blayney, Daish, Lewis, Pilgrim) are doing plenty of research of our own. That is, what vaccinations and medications to take to the Amazon in 3 months' time! The big risks appear to be typhoid, hepatitis A, yellow fever, and malaria. That's at least £100 worth of jabs and pills and one hopes that the side effects don't make us more sick than the illnesses! There's also Dengue Fever but there's no vaccine for that – you just have to smother yourself in N,N-Diethyl-meta-toluamide (DEET to you and me) and avoid getting bitten by the particular mosquito that carries the virus! The leaflet that I picked up at the surgery also warns that death is 100% likely in the event of a human contracting rabies, so I don't think we'll be stroking too many furry animals in the jungle!

Back in the domestic scene, I feel a breath of fresh air in the Premier League this season with the heightened profile of Roberto Martinez as the manager of Everton. His articulate, intelligent and almost boyish enthusiasm for football shone (*Sports Nut continued on page 49.*)

## REFLEXOLOGY For Health and Vitality

Reflexology has been  
an effective treatment for:

Migraine • Back Pain • Infertility • Arthritis • Sleep  
Disorders • Hormonal Disorders (Including PMT) • Sports  
Injuries • Digestive Disorders • Relaxation • Stress Related  
Conditions (exams, work, home, life) • Little people in  
nappies! (BabyFlex) • Men and Women, young and old.

**Jennie A Fatibene MAR MBFVEA**

**Tel: 01223 811045  
or 07821 611315**

**\*\*Gift vouchers available\*\***

## N & G Marsh of Burwell Engineers

For all your metalwork requirements

- ❖ Welding Services
- ❖ Handrails
- ❖ Security Bars
- ❖ Gates
- ❖ Mower Repairs
- ❖ Tow bars
- ❖ Metal Railings
- ❖ RSIs Supplies

Services to the Building Industry  
Tractors & Agricultural Machinery  
Repaired

Tel: 01638 741354 or 741 926

# Bottisham

## Post Office and Village Stores

12 High Street Bottisham Cambridge CB25 9DA  
 Tel: 01223 811281 PO Tel: 01223 812863

Shop opening: 5.30am-8pm 7 days  
 Post Office: 9am-5.30pm Sat 9am-12.30pm

### Your All-in-One Shop

Groceries, chilled & frozen food, delicatessen, confectionery, off-licence, haberdashery, household, healthcare, stationery and greeting cards.

Free local delivery of grocery orders

TV licence, Top-ups, elec/gas keys/tokens, money transfer, phone cards, congestion charges.

Newsagency with home delivery to Bottisham, Lode, Longmeadow, Quy, Six Mile Bottom and Swaffham Bulbeck. Dry Cleaning & Floral Service

### FREE TO USE ATM MACHINE

Vehicle Licences • Personal Banking • Foreign Exchange  
 Phone Cards & Mobile Top-Ups • On-line Lottery.

## Rothwell's Carpet Cleaning

Thorough, professional cleaning of Carpets, Upholstery, Rugs, Tile & Grout and Natural Stone floors.

- 'Truck mount' cleaning system
- Family firm est 1993
- Great customer service
- We move all the furniture
- Fully Insured
- Highly trained & experienced
- 100% satisfaction or its free

*If you use us,  
you'll recommend us!*



For a quote  
or advice please  
**07545 962 026**  
**01223 832 928**  
www.rothwells.biz

(Sports Nut continued.)

brightly in a recent interview in which he explained how he was re-focusing his team after their heavy defeat by Liverpool. This is a man who watches games on TV at the apex of an L-shaped lounge so he can hold hands with his wife who is watching a different channel on another screen! Altogether now – aaaaaaaah! Next England manager, anyone?

TTFN

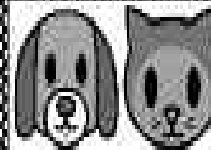
Gerry Daish

Copy deadline for next issue is 14 March.

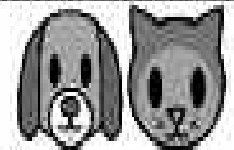
Please send material to the editor at [cresset@bottishampc.org.uk](mailto:cresset@bottishampc.org.uk)

Have you thought of advertising your business in *The Cresset*?

Email the Editor for details: [cresset@bottishampc.org.uk](mailto:cresset@bottishampc.org.uk)



## "Nesslands of Burwell"



Your local Kennels, Cattery and Doggy Day Care!

Dog Grooming, Horse ménage and Caravan Storage facilities.

Call Tim or Arya on 01836 720823 and 07820 615362  
 Ness Road, Burwell, CB26 0DB [www.Nesslands.co.uk](http://www.Nesslands.co.uk)

## Beauty By Abi

Qualified and Insured Beauty Therapist  
 Master Technician in Eyelash Extensions

Treatments include: Gel To 2 week, manicures, pedicures, eyelash extensions, eyelash and brow treatments, waxing, massage, tanning, facials and more

Phone 07960492073 for an appointment

## LOCAL ELECTRICIAN

**Bottisham based**  
**20+ years experience**

All domestic work undertaken

- ▣ Rewires
- ▣ Lighting
- ▣ Burglar alarms
- ▣ Security lighting

Free quotations, NICEIC registered

Power Control Panels, est. 1969  
01223 212 054 or 07718 122541



**spoton**  
REPAIRS

**PAINT SCRATCHES**

**BUMPER SCUFFS**

**DENTS**

**ALLOY WHEELS**

Have your car claim forms  
by calling us direct.

For a free estimate  
07796 231414  
01284 811236

We come to you.  
[www.spotonbodywork.co.uk](http://www.spotonbodywork.co.uk)



## ANGLIA TREE CARE

**LARGE ENOUGH TO COPE • SMALL ENOUGH TO CARE**

**80% OF OUR WORK IS VIA RECOMMENDATIONS**  
**TREE SURGERY & FELLING • HEDGE MAINTENANCE**  
**STUMP GRINDING • FULLY QUALIFIED**  
**FULLY INSURED • 24/7 SERVICE**  
**All work carried out to BS 3998**

**Free Estimates Given within 7 days**



Tel. 01223 424454 • [INFO@ANGLIATREECARE.CO.UK](mailto:INFO@ANGLIATREECARE.CO.UK)

**M E M B E R**  
Guild of Master Craftsmen

## Anglesey Abbey and Wicken Fen

The Anglesey Abbey Snowdrop Festival runs through to Sunday 9 March – although the damp relatively cool weather of recent weeks could extend the flowering season.

Work has begun to repair the sluice running by Lode Mill which should be completed by the end of March. If you walk in that area the footbridge by the mill will be closed for a short time as it is being replaced – in the interim period the footpath will run along the top of the old sluice.

Talking of walking -we will be launching a regular Heart Beat Health Walk at Anglesey Abbey from 17 April. Walks will depart from the car-park at 1.30pm and last around an hour, covering 3-4 miles. In the meantime we are looking to recruit and train walk leaders – if you're interested please contact Lois Baker on 01353 720274 or e-mail [lois.baker@nationaltrust.org.uk](mailto:lois.baker@nationaltrust.org.uk)

Up at Wicken, repairs are set to start to our historic windpump which was severely damaged in the gales of Boxing Day. The work is expected to take around six weeks, so hopefully it will be back in working order in time for Easter.

From the beginning of March we will be opening our historic Fen Cottage 7 days a week. If you love history, enjoy meeting people and have some free time on your hands – how about becoming a Fen Cottage Guide. Please contact Isabel Sedgwick on 01353 720274 or [Isabel.sedgwick@nationaltrust.org.uk](mailto:Isabel.sedgwick@nationaltrust.org.uk) if you would like to find out more about volunteering.

Our spring talk series continues with a talk by our Grazing Ranger, Carol Laidlaw, on the 'Grazing animals at Wicken Fen' on Wednesday 5 March, at 11.30am in the Learning Centre. Future talks are the 'History of the National Trust' on 2 April, and the 'Gardens of Anglesey Abbey' on 7 May. Talks last around one hour and are free.

Forthcoming events include our pre-school **Mucky Pups – Springtime Adventure** on 12 & 13 March £4, You can learn how to make plant supports for your beans and sweet peas on **Willow Weaving for your Garden** on Saturday 15 March, £30 inc all materials – tickets for these events are available from the Visitor Centre on 01353 720274. Finally there's a **Family Bird Watching Walk** on Saturday 15 March, 2-4pm £4.75 per child. The ticket price includes an accompanying adult and materials to build a bird nesting box at the end of the walk – tickets can be purchased from the NT Box Office on 0844 249 1895.

## Do something special... *Become a Foster Carer in 2014*

Cambridgeshire County Council needs more foster families to help transform lives and meet the needs of local children and young people. Although the service has seen an increase in enquiries they still need to encourage more people to make that call and consider fostering.

People become Foster Carer because they want to give children and young people a home for as long as they needed it. There are so many positive changes that a families love and commitment can make and anyone who has a caring nature should consider fostering.

Every child is different so we need different Foster Carers. If you have a spare room and can offer stability, security and the positive experience of a loving family then we want to hear from you.

You might be:

- Married, in a civil partnership, single or living with a partner
- From an ethnic background
- In work, unemployed or retired

Recruiting local people will mean that children and young people can live in their own community, continue to attend the same school and maintain contact with their family and friends.

In return we offer generous allowances including a start up package, 24 hour support and full training. **Call our freephone number on 0800 052 0078 or email [fanda@cambridgeshire.gov.uk](mailto:fanda@cambridgeshire.gov.uk)**



## Trevor's Local Gardening Service

**For general garden care  
and maintenance**

- Lawn and hedge trimming, turf laying and borders
- Paths and patios repaired and cleaned
- Fence and shed installation and repair
- Other small temporary jobs undertaken by request

For a free quote contact  
Trevor Cox

**Tel: 01223 812616**

# M&P

**LANDSCAPE AND DESIGN**

Patios, Block Paving, Fencing,  
Turving and all Gardening needs.

References available on request.

Local tradesman • Free estimates

**PLEASE CALL**

**01223 811144**

MOB **07837 358550**

## Jolley Old World

### *Fancy Camping!*

No, I don't mean in tents or caravans or of the 'elegant in gait' variety... But if you lived in 'Botsam' sometime between 1550 and the early 1900s you may well have gone off with your mates 'Camping'.... More later perhaps!

I was very pleased to have received a call from Hugh Rogers a few weeks ago asking if I would like to take on the custodianship of his work on the history of Bottisham. Hugh has written four books on various aspects of the local history that surrounds us and that, to some extent, still has an impact on our daily lives and attitudes today. He also has the raw material for a fifth! I was equally delighted to have had the opportunity to sit down for an hour or so with Tony Newman the other week recapping on his memories of Bottisham; man, farmer and boy, spanning a good eighty or so years.

In the material passed on to me by Hugh are village maps covering a number of centuries including an eighteenth century 'Enclosure Map' dating from 1798. This map shows how the fields in and around Bottisham were distributed; thus broadening the class of person that could own land and accordingly be entitled to be included under the term; 'The Landed Gentry'. Essentially the Enclosure Acts dating from 1745 directed and administered the subdivision and fencing off of common land and open fields into individual plots which were then allocated to those people deemed to have held rights to the land - most of these already titleholders of estates. Some Cambridge Colleges also came off rather well, in particular Peterhouse, Downing and Trinity as did the Church.

When talking to Tony Newman he spoke of many things including an area around 'Stocks Hill' where the village used to hold its annual feast and fair. By all accounts the magnitude of the event was quite considerable featuring numerous stalls, swings, steam carousels and helter-skelters. Stocks Hill is still there today opposite the Church but more commonly known these days as simply 'Stocks' or 'where Stocks was'. As its name suggests 'Stocks Hill' is where local lawbreakers were detained to be pilloried with rotten fruit, vegetables and eggs hurled at them by the local community. This form of public humiliation was common place from medieval times into the mid-19th century. Whilst attempting to research this a little more I found reference to an area nearby recorded as 'Camping Close' but could I find this on any village maps... As luck would have it during a recent visit to the Cambridgeshire Records Office I did indeed find reference to a 'Camping Close' in Bottisham being recommended by Parish Council for the site of the 1919 Village Recreation Ground. Unfortunately as some of you will know the village lost its Recreation Ground in 1941 when it was requisitioned by the Air Ministry. Alas, it was never returned to the village and was eventually sold off for houses in the 1950s - now known as Jenyns' Close.

According to an entry in Wikipedia; *Bottisham's camping place, (Camping Close) is said to have been south-east of the church, recorded from the 1520s, and was still so named, though privately owned c. 1800, into the 1930s. From the 18th century the Bottisham Village Feast was held there for one or two days after Trinity Sunday. Although in decline in the 1860s, the feast was still being celebrated until well after 1900.* So, in effect, a Camping Field or Close was for a number of centuries a specific space set aside in a village for recreational pursuits.

The Bottisham Feast is also recorded to have been held in Bendyshe Close, which is the field behind Parsonage Farm alongside the public footpath to Little Wilbraham - not far from the Church. Wouldn't it be wonderful if we as a village would want to recreate such nostalgic events! Anyway I digress - could Bendyshe Close also have *(Jolley continued on page 55.)*



## TIM PHILLIPS & Co. Accountants

Independent, specialist service for:  
**Small Business • Self Assessment  
Personal Taxation**

Free initial consultation - no obligation  
**EASY, FREE PARKING**

Copley Hill Business Park, Cambridge Rd., Dabraham  
Off A1307 between Wandulbury and Dabraham

**Tel: 01223 830044. [www.tpaccounts.co.uk](http://www.tpaccounts.co.uk)**



# Need glasses? Save Your Money

## Buy Direct

from ALL EYES Specs Makers

Complete frame & lenses:

✦ Single Vision from **£9.00!**

✦ Bifocals from **£39.00\***

✦ Varifocal from **£59.00\***

**Save up to 75% on:**

- Premium frames & lenses
- High/Complex prescription
- Reglaze your own frame save £\*

- Emergency supply & repairs\*
- Large selection of frames
- Free NHS specs\*

(\*T&Cs Apply please ring for details)

*Why pay more?*

*Just bring in your prescription for a Top Quality  
bargain.*

Come and start saving:

20 Norman Way Ind. Park, Over, Cambridge CB24 5QE

**[www.all-eyes.co.uk](http://www.all-eyes.co.uk)**

Factory Opens: (Mon-Fri) 9.00am to 5.00pm

Tel: **01954 231545** or 07824 706969

—Please ring to make an appointment—



**ALL EYES**  
Spectacle Makers

## At a Glance

### MARCH

- 4/11/12/18/19/25/26 BRBL Line dancing
- 4 BBPC Projected Image Competition No. 3. Judge Sarah Kelman.
- 11 BBPC Practical Evening. Table top Photography. Bring your camera.
- 18 WI Meeting at Bottisham Village College 7.30pm
- 18 BBPC Print Competition No. 3. Judge Paul Radden. Harlow Photo Club.
- 22 BC Quiz night
- 25 BBPC An evening with Liz & Barrie Hatten. A travel talk.
- 25 GC Make the most of a small garden – Margaret Nimmo-Smith

### April

- 1/8/9/15/16/22/23/29/30 BRBL Line dancing
- 1 BBPC The Hanson Trophy. PDI Competition. Judge Malcolm Tinn.
- 8 BBPC AGM For Members
- 12 BC Coffee Morning
- 20 Lib Book Sale on the Triangle from 8.30am
- 22 GC Make the most of a small garden – Margaret Nimmo-Smith
- 29 BBPC "It's a Small World". Talk about macro photography by Martin Johns.

### May

- 6/13/14/20/21/27/28 BRBL Line dancing
- 6 BBPC Roger Human Print Trophy. Judge Vic Hainsworth ARPS
- 16 BBPC Social evening. Presentation of cups etc.
- 27 GC Snowdrops and winter interest plants - Richard Ayres MBE

BC = Bowling Club • GC= Bottisham & District Gardening Club meets at BRBL Poppy Restaurant at 7.30pm • BRBL = Bottisham Royal British Legion Social Club • BBPC = Bottisham & Burwell Photographic Club meets Tuesdays at Lode Chapel 7.30pm - Non Member £2 • WI = Meet at the BVC Lecture Room at 7.30pm • Lib = Bottisham Community Library Assoc. • MU = Mother's Union meet at Lode Chapel 2.30pm Third Thursday. *This list is intended to be a 'quick view one liner' with brief details and a contact number if possible. Please let the editor have details by the 11th. E-mail: [cresset@bottishamBBPC.org.uk](mailto:cresset@bottishamBBPC.org.uk)*

## HUGE SPRING JUMBLE SALE

**Saturday 29th March 2-4pm.**

**Lode Social Club**

Entrance is £1 for adults and free for children.

Please bring any jumble to the club from 10.30-12 in the morning.

Proceeds will go partly to the cycle path and partly to a charity to be decided. Last time we made £600 which was a record. To achieve this we need lots of jumble and lots of marvellous people helping to sort and sell the stuff, and finally, lots of people coming to buy!

*Fran Platten 01223 813 016*



(CCC continued.)

## Spotlight on scams and mis-selling

Recently the national press have covered the story of Sylvia Kneller, a pensioner who lost over £200,000 to scam letters over the past 56 years. Friends and family warned her that these were scams, but she didn't want to believe them, ever hopeful that a big windfall would soon be hers.

At Trading Standards we sadly come across residents in Cambridgeshire who have lost significant amounts of money, for some their life savings, to such scams. These scams are operated by career criminals who use sophisticated tactics to persuade you to part with your money. We hope the article below will help you to avoid many of the most common types of scam.

✘ **Scam letters** Commonly these claim you have won a prize and ask for a small payment in advance... and then another, each time requesting a larger sum. No prize is ever forthcoming. We also frequently uncover letters from supposed 'clairvoyants' who claim they can bring you luck or protect you from harm in exchange for payments. These are all scams and once you send money to one, you will be inundated with more.

✘ **Telephone scams** Beware of callers who claim to be calling about the non payment of telephone bills and threatening to disconnect you unless immediate payment is made. Check the facts and contact your provider on the number provided in your paperwork. Ensure there is a dialling tone before calling them in case the fraudsters have remained on the line ready to pose as your service provider. If there is not a dialling tone, try again in 5 minutes. • You may experience a series of silent calls, followed by a call from a company offering to help prevent silent calls, for a fee. This call is made by the same fraudsters who were making the silent calls.

✘ **Door-to-door callers** With regards to house alarms, beware of telesales calls (often followed up by a house call) offering an alarm system at virtually no cost. The catch is the annual service charge which amounts to thousands of pounds. • Beware of any trader who knocks at the door offering to do home improvement or gardening work for you, no matter how friendly they seem or how cheap the job appears. This is the prime way rogue traders find customers. • Be cautious of door-to-door callers who claim to be ex-convicts who are trying to turn their lives around by selling domestic products such as dusters. Their story is untrue and once you buy from them they will call on you again and again.

For further information or to report a scam, visit Action Fraud's website [www.actionfraud.police.uk](http://www.actionfraud.police.uk) or call 0300 1232040.

If you feel that you are trapped in a cycle of responding to scam letters/calls and are sending frequent payments, we can provide you with support to help you break the cycle. Please contact us via the Citizens Advice Consumer Helpline, on 0845 4040506.

**Quiz Night**  
Friday 28th March 7.30pm  
£2 per person Maximum team size 8

Not available! you are welcome to bring your nibbles!

If you book & pay for a table of 8 by the 8th March you will receive a free bottle of wine for your team

Bottisham Community Primary School

I probably qualify as the oldest paper-boy in the area! My wife, Ann, and I inherited the round in Lode from our son when he became ill with chronic migraine. We share the round between us, and I really love it. Out in the morning, rain or shine, light or dark. I always take my binoculars with me and I've actually seen 62 different species of birds during those early morning walks (I guess I'm a bit of an 'anorak' when it comes to lists and things!)

One of the things I've enjoyed over the last couple of months is the Jackdaw flight. At first light, before sunrise, there comes a sound of 'chak, chak, chak' and then a wave of several hundred Jackdaws flying in from their overnight roost out on the fens. As they reach Lode a group of them break off and circle down to their daytime patch around the chimneys and aerials of Mill Road. Others fly on, presumably dispersing to Quy, Bottisham and beyond. Jackdaws are very sociable, communicate well and pair for life.

The first bird named in the Bible was the Raven which, like the Jackdaw, is a member of the crow family, sent out by Noah to look for dry land. (Genesis 8:7) and in Luke's gospel it is the Raven which Jesus says we should consider – 'They do not sow or reap, they have no storeroom or barn; yet God feeds them'. (Luke 12:24)

Jesus is teaching here that we should learn to put our faith in God and trust him to provide for our needs. During February and March at RE:NEW we shall be looking at what Jesus taught in the Sermon on the Mount and learning more about how we can live our lives in ways that reflect and follow the teaching and example of Jesus.

Anyone will be warmly welcomed at Bottisham Primary School at 10.30 am on Sundays. We have crèche facilities and groups for children and young people. Why not come and check us out? Like the Jackdaws we are very sociable, we like to congregate together, and we enjoy a good chat!

Peter Wells

### Services in March 2014

2 March 10.30am – RE:NEW (Bottisham Primary School)

9 March 10.30am – RE:NEW Café style (at the School)

9 March 6.20pm – Traditional service. (Lode Chapel)

16 March 10.30am – RE:NEW (at the School)

23 March 10.30am – RE:NEW (at the School)

23 March 6.20pm – Traditional service. (Great Wilbraham Chapel)

30 March 10.30am – RE:NEW (at the School)

For more information about any of the activities of RE:NEW please contact Rev. Keith Morrison on C.813055 or Peter Wells on C.812388. Email: [pandawells@cheerful.com](mailto:pandawells@cheerful.com) Or visit our website at [www.re-new.me.uk](http://www.re-new.me.uk)

Copy deadline for next issue is 14 March.

Please send material to the editor at [cresset@bottishampc.org.uk](mailto:cresset@bottishampc.org.uk)





# Excelr8 Learning

**Tuition Centres in Milton, Hardwick, & Sawston**

- ✓ Expert Maths and English Tuition.
- ✓ Personalised learning programmes.
- ✓ Building your child's self-esteem and confidence.

Our FULLY QUALIFIED teachers have the experience and motivation to help students achieve their potential. Whether parents are worried about their child's progress, or simply wish to provide some extra quality tuition, Excelr8 Learning teachers are here to help.

Lesson prices are from **£22.05** and include: a 75 minute lesson, parent feedback after every lesson, high quality resources and carefully planned lessons every time. Children feel relaxed and happy; parents value the honest, independent advice we provide.



**FREE TRIAL** lessons can be arranged by phoning or completing the free trial form online.

[www.excelr8learning.co.uk](http://www.excelr8learning.co.uk)  
01954 211888



# DG COMPLETE PROPERTY MAINTENANCE



- CARPENTRY
- PAINTING/DECORATING
- FITTED KITCHENS
- TILING/BATHROOMS
- GLAZING
- PATIOS/PATHS
- FASCIAS/GUTTERING
- DRAINS

desgoody@gmail.com Mobile: 07542 757234  
Tel/Fax: 01223 811911

## East Camb District Councillors' Notes

### PROTECTION FROM FLOODING

The dreadful flooding in the south of England has prompted questions about how well this area is protected. Nearly all the land in the District which is less than 5 metres above mean sea level is under the protection of Drainage Boards, and land in the south comes under the Swaffham Internal Drainage Board. It has a pumping station at Upware and houses three electric pumps which regularly lift water into the River Cam from its drainage system. The income to pay for drainage, and for the maintenance of the drains, comes from landowners and the District Council. Landowners and Councillors serve on the Boards. The District pays levies to the Boards from Council Tax paid by households and businesses, since those within the drained areas and those on slightly higher ground benefit from drainage. 12% more was paid in levies last year to cover increasing costs. The Boards also have to abide by nature conservation regulations and are consulted on planning applications. There are limits on water run-off rates from new developments.

Land in the south of the District is prone to flooding from the River Cam, the Great Ouse and the Cambridgeshire Lodes should their banks overflow after heavy and prolonged rain over Cambridgeshire and Bedfordshire. These carry water from higher ground and are under the control of the Environment Agency. It also runs the pumping stations at the ends of the lodes which are used when their water cannot drain naturally by gravity into the rivers.

The Environment Agency has to endorse risk assessments if new buildings are proposed on Flood Zones 2 and 3 and also developments of more than 1 hectare on Zone 1. Flood zones, rapid inundation zones, flood alerts and flood warnings in England can be found on the Environment Agency's website, together with river levels, such as at Bottisham Lock and on Quy Water in Lode. Sea level rises, land subsidence, building in and around Cambridge, soil erosion and more extreme weather events make water management and flood protection increasingly difficult.

### PLANNING APPLICATIONS

Seven planning applications were determined at the Planning Committee's meeting in February, following visits to the sites beforehand. The committee approved the Ely Southern Bypass, as consultees to the County Council's planning application. The bypass would enable the level crossing by the station to be removed and through traffic routed over a new river and railway bridge about a kilometre to the south. The underpass would remain for use by local car traffic, bicycles and pedestrians and have traffic lights.

In Kirtling, a new house next to the Red Lion pub for the owners was approved. It is hoped that this will make the pub more viable and offer visitor accommodation within it. Safeguarding the future of pubs in the District was discussed at a previous meeting of all District Councillors.

A solar farm was approved in Burwell parish, near the A14. This will occupy 62 hectares and have 108,000 solar panels. It would generate enough electricity over a year for over 6,000 homes consuming on average 10 kWh per day.

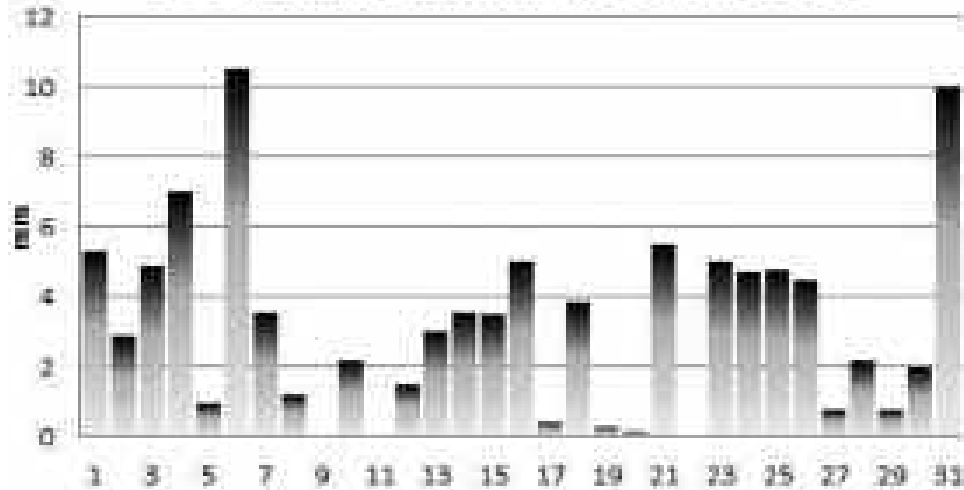
A "passive house" was approved in Wentworth which will not require fossil fuels (gas, oil or coal) to be used for heating etc. It will have exceptional insulation and ways of trapping energy through its windows, and large areas of solar hot water and photovoltaic panels. It is expected to generate more electricity for the grid than it uses over a year. The committee requires that the energy performance is published on a website for 5 years for everyone to follow.

*Dist Cllrs Robert Stevens and Kevin Ellis*

## The Rain Spot

Even though we fared much better than the West Country and more recently the Thames Basin, we expected our own rainfall to be high. It was 100.3mm. Over twice that of December and well over twice that of January last year. Our record here in Bottisham for January was in 2003 when we had slightly more at 104mm. *Terry Chapman*

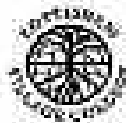
### Bottisham Rainfall for Jan 2014



Copy deadline for the next issue is 14 March.

Please send material to the editor at [cresset@bottishampc.org.uk](mailto:cresset@bottishampc.org.uk)

## Bottisham Village College Adult and Community Learning



Why not learn a new skill at one of our forthcoming weekend workshops?

**Saturday 8 March:**

Bart Samuel (Indian Cookery) Dinner Party / Crossmaking / Felt Making – Making a felt bag  
Photofix / Upholstery and Chair Caning / Woodturning

**Saturday 15 March:**

Silver Clay Jewellery / Sugarcraft – 2 Tier Cakes / Traditional Thai Cookery and Vegetable Carving

**Saturday 21 and Sunday 22 June:**

First Aid course (2 days)

To find out more visit our website: [www.bottishamvc.org/adultlearning](http://www.bottishamvc.org/adultlearning)  
or contact the Community Office on 01223 621302

[adult.learning@bottishamvc.org](mailto:adult.learning@bottishamvc.org) Facebook - Bottisham Adult & Community Learning

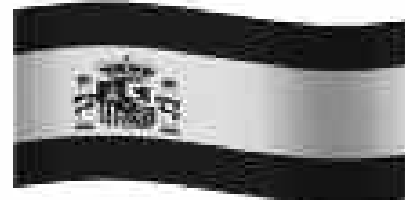
## Bottisham WI

Richard Todd arrived at our December meeting with lots of foliage for his demonstration on making Christmas table decorations. He outlined his career and how he came to work for the National Trust at Anglesey Abbey and become Head Gardener. He gave many tips as he made the displays and encouraged everyone to have a go. Several members rose to the challenge resulting in some lovely centrepieces which were prizes in the raffle. Later, mulled wine and mince pies were enjoyed by everyone.

In January our speaker was Mary Barnes from “Surestart.” Mary informed us of Surestart’s history and all the activities and support it provides for families with children under 5. A staff of 11 (some part-time) work in this area and the main contact bases are at the Children’s Centres in Bottisham (19 Lode Rd. BVC) and Soham (Weatheralls Primary School). Several venues are used to provide the regular activities and support groups. Play sessions, Multi-sports, Rhyme time & songs are just a few of the free activities on offer. As well as parents, grandparents, child minders, carers etc. can accompany the children. Support with all aspects of child care and parenting can be found from the various clinics, groups and courses with advice, tips and information.

The 2014 list of speakers promises a wide variety of topics on travel, craft, history, music, food banks and gardening etc... If you are not a member and would like to find out more - please do come along. Our next meeting is our AGM on Tuesday 18th March and will be in the Lecture Room at Bottisham Village College, 7.30pm. The speaker will be Sue Hotchkiss and her talk is “African Ascent – Climbing Kilimanjaro.”

### SPANISH FOR GCSE STUDENTS



Native Spanish speaker

and

A-level student

offers

Spanish conversation

and support to GCSE students

Phone *Clara*

on

07799057572

## Dale Parker

Landscape Gardener  
and Tree Surgeon

Turfing, Seeding,  
Planting, Patios,  
Drives and Fencing

Trees –  
Topping, Lopping,  
Shaping and Felling  
Hedge Cutting

**FREE ESTIMATES**

Tel: 01284 717107  
Mobile: 07799 671010

# TV AERIALS

# SATELLITE

# DIGITAL FREEVIEW

Installations  
Extra points etc.  
Tuning in of TVs, Digiboxes etc.

Experienced local engineer

**RICHARD FORTEY**

**01638 662119**

No Call Out Charge

At Wired we don't have problems - only solutions



freesat



We offer solutions for all your Aerial, Freesat, CCTV, Telephone and Data Cabling needs.

No job is too big or too small for our engineers.

With no call centres, you will be able to speak directly to the engineer.

We offer an efficient, cost effective and friendly service.

Contact us now for a no obligation quote.

Contact us NOW for a free no obligation quote

**01638 281234 / 07761 572186**

[www.allwired.co.uk](http://www.allwired.co.uk)

[info@allwired.co.uk](mailto:info@allwired.co.uk)

## BOTTISHAM DENTAL PRACTICE

NHS & PRIVATE TREATMENT

*CLAIRE JACKMAN BDS & ASSOCIATES*

*Tunbridge Lane, Bottisham, Cambs., CB5 9AE*

OPEN: MONDAY 9.00 am to 5.00 pm  
TUESDAY 9.00 am to 5.00 pm  
WEDNESDAY 9.00 am to 5.00 pm  
THURSDAY 9.00 am to 5.00 pm  
FRIDAY 9.00 am to 5.00 pm  
SATURDAY Private 9.00 am to 1.00 pm

*New NHS and Private Patients Welcome*

Please phone for an appointment

**01223 811844**

## Bottisham Parish Council

### CHAIR

CHRISTINE BRYANT 127 High Street 811767

### PARISH COUNCILLORS

ROBERT ALTHAM Hall Farm, Lode Road 811418  
STEVEN ARONSON 61 Bell Road 812823  
HILDA BUCHANAN 55 Beechwood Avenue 811689  
MARIA DICKSON 5 Jenyns Close 812499  
ROS HALL 18 Spring Lane 811819  
MARK HEIDER 6 Rowley Garden 813524  
STEVEN O'DELL 23 Downing Close 812230  
JON OGBORN Woodward Drive 812631  
PAUL WHITE 65 Ox Meado 813630

### DISTRICT COUNCILLORS

KEVIN ELLIS 20 Peacock Drive 813034  
ROBERT STEVENS 51 Northfields, Lode 811643

### COUNTY COUNCILLOR

MATHEW SHUTER The Old Maltings, High St, Brinkley 01638 508729

### PARISH CLERK

CLAIRE FULLWOOD 26 Peacock Drive 07914 219732

## BOTTISHAM COMMUNITY LIBRARY ASSOCIATION

### LIBRARY OPENING HOURS

Monday Closed  
Tuesday 3-5pm and 6-8pm  
Wednesday 10-11.30am  
Thursday 3-5pm  
Friday 6-8pm  
Saturday 10am-12noon

*Working in Partnership with the County Library Service.*

## Useful Information

<b>Bottisham Website:</b> .....	WWW.BOTTISHAMPC.ORG.UK
<b>Holy Trinity Church:</b> Revd Sue Giles.....	812726
<b>Roman Catholic Priest:</b> Monsignor Eugène Harkness. Parish of St Philip Howard.....	01223 211235
<b>RE:NEW/Lode Chapel:</b> Rev. Simon Goddard.....	01223 812881
<b>Bottisham Surgery:</b> .....	
Enquiries and Appointments.....	810030
Out of Hours only – Urgentcare Cambridge.....	111
<b>Bottisham Library:</b> .....	812354
Library hours: Monday Closed; Tuesday 3-5pm and 6-8pm; Wednesday 10-11.30am Thursday 3-5pm; Friday 6-8pm; Saturday 10am-12noon	
<b>Cambridgeshire Police HQ:</b> .....	01480 456111
<b>Cambridgeshire Police:</b> .....(NON-URGENT MATTERS) ring 101 - In EMERGENCIES ring 999 Police community support officer Ian Hawkins PCSO 7274 at Ely Police Station.....	Contact through 101
<b>1st Bottisham Rainbows/1st Bottisham Brownies:</b> Kay Pearce.....	811055
<b>Bottisham Bowling Club:</b> Keith Gibson, Secretary.....	811049
<b>Bottisham Boys Football Club:</b> Jim Tideswell.....	812591
<b>Bottisham Carpet Bowls Club:</b> Nora Watson.....	812121
<b>Bottisham Community Primary School:</b> Headteacher Paul Belzar.....	811235
<b>Bottisham Cricket Club:</b> Graham Barker/Charles Fletcher.....	812087/811039
<b>Bottisham Football:</b> John Turner/Tim Sale.....	07841592203/07743862836
<b>Bottisham Pharmacy:</b> .....	812321
<b>Bottisham Pool Association:</b> Manager - Jason Rye.....	811121
<b>Bottisham Royal British Legion Club:</b> Secretary - Suzy Woolley.....	812063
Branch Chairman: John Overton.....	811792
www.britishlegion.org.uk/branches/bottisham	
<b>Bottisham Scout Group:</b> Group Contact: Linda Jones.....	813040
<b>Bottisham Sports Association:</b> Graham Barker.....	812087
<b>Bottisham Village College, School:</b> .....	811250
Evening Classes, Clubs and Youth Club Information.....	811372
<b>Bottisham W.I.:</b> Secretary - Jenn White jenn65@tiscali.co.uk.....	811600
<b>Cambridgeshire County Councillor:</b> Mathew Shuter.....	01638 508729
<b>East Cambridgeshire District Offices:</b> .....	01353 665555
<b>East Cambridgeshire District Councillors:</b> Kevin Ellis.....	813034
Robert Stevens.....	811643
<b>Girlguiding Bottisham District:</b> Cambs East County office • www.cambseastguides.org.uk.....	01223 813917
<b>Parish Council Chairman:</b> Christine Bryant.....	811767
<b>Parish Council Clerk:</b> Claire Fullwood.....	07914 219732
<b>Queen's Court Day Centre:</b> .....	811905
<b>MP for Cambs South East Constituency:</b> James Paice (House of Commons. London SW1).....	Direct Line: 020 7219 5063 E-mail: paicejet@parliament.uk www.jimpaice.com Fax: 020 7219 3804
<b>Cambridgeshire Trading Standards Helpdesk:</b> .....	0845 3030666
<b>Saplings Playgroup Playhut:</b> .....	813226
<b>Milton Road Tip:</b> Apr to Sept - Weekdays 9.00am-8.00pm; Weekends 9.00am-6.00pm..... Oct to Mar - 9.00am-4.00pm	860674
<b>CRESSET Editor:</b> .....	email: cresset@bottishampc.org.uk
<b>Treasurer, Advertising rates and payment:</b> Rhona Walker, 94 High Street, Bottisham.....	811402
<b>Distribution:</b> Ken York, 20 Pound Close, Bottisham.....	811367
<b>Design/Artwork:</b> ONG • codge.com • codge@codge.com.....	01449 675548

*The Cresset: While every effort is made to ensure accuracy we cannot accept liability for any mistakes or misprints. The views of, or any opinions expressed, are not those of the EDITOR. The Editor cannot accept any responsibility for statements made in advertisements.*



ONG

From unique wedding invitations,  
new home cards, and Ladies' Festival menus—  
to ads, brochures and business cards, let

*Old Newton Graphics*

do the designing for you!

■ promotional design ■ brand identity ■ advertising ■ marketing ■ direct mail ■ packaging  
exhibitions ■ outdoor advertising ■ ecomms ■ logo design ■ illustration ■ photography  
■ retouching ■ business collateral ■ copywriting ■ brochures ■ magazines ■ book covers  
programmes ■ prospectuses ■ booklets ■ posters ■ pamphlets ■ catalogues ■ MAC training

**codge.com** ■ **codge@btinternet.com** ■ **01449 675 548**

# COMPLETE PLASTERING

TILING • DRY LINING • ALL BUILDING WORK  
CARPENTRY • SCREEDING  
LIME PLASTERING • PAINTING & DECORATING

Covering all of Cambridgeshire

CONTACT: GLENN WAIDELL

TEL: 01223 811991

MOB: 07734 904054

E-MAIL: COMPLETEPLASTERING@MSN.COM

RELIABLE SERVICE

FREE ESTIMATES

# E.C. AUTOCARE

(Est. 1980)



## SERVICING & REPAIRS

Cars & Light Commercials  
Diesel & Petrol



## MOT TESTING STATION

Servicing to all makes of Cars  
& Light Commercials

- ENGINE MANAGEMENT DIAGNOSTICS
- TYRE - BRAKES - EXHAUSTS
- AIR CONDITIONING SERVICING
- GEARBOX SPECIALISTS MANUAL & AUTOMATIC

## FAST - FRIENDLY - FAMILY BUSINESS

56 HIGH STREET, BOTTISHAM

Also at

A1303 SERVICE STATION, BOTTISHAM

(behind Brian McKay)

Tel.01223 811122 or 01223 812357

